

product
catalogue

06.2024

Dear Ladies and Gentlemen,

here is the newest catalog of Labo Print - advertising production house.

While browsing through its contents, you have an opportunity to get acquainted with the possibilities that we offer as an International Advertising Solutions Provider.

While reading, you will learn that we serve customers all over Europe, engaging hundreds of specialists in this process every day.

You will find a lot of inspiration and information about the fact that Labo Print provides comprehensive advertising solutions, from large format, through packaging for e-commerce, product labels, spatial letters, to a comprehensive offer for trade fairs and events.

You will discover almost unlimited possibilities for the creation of advertising products and deepen your knowledge about printing technology.

However, all this is not the most important thing. You are the most important for us. Nobody else but you and the projects you entrust us with, because they mobilize us to constant change for the better, to set new directions of development, to search for the best solutions. It is thanks to your trust that we are invariably market leaders.

Thank you for being with us.

Labo Print team





advertising
production
house

6

SIX
YEARS IN A ROW
DIAMOND



6

SIX
YEARS IN A ROW



7

SEVEN YEARS
ON THE WSE





■ BEACH FLAGS

PORTABLE SYSTEMS

STANDARD

PREMIUM

ACCESORIES

■ MAST FLAGS

CONFECTION

■ SPECIAL OFFER

EURO PALETTE COVER

KAKEMONO

TENT

POP-UP SANDWICH

YUKA STAND

ROLL-UP SUNA ECONOMIC

ROLL-UP SUNA

ROLL-UP MIZU

ROLL-UP KAZE

X-BANNER

■ ADVERTISING WALLS

WALL

EUROPA STRAIGHT

EUROPA HORIZONTAL

EUROPA VERTICAL

YUKA

■ EVENT OFFER

DIRECTOR'S CHAIR

DECKCHAIR

DOUBLE DECKCHAIR

BEAN BAG EGG

BEAN BAG

CUBE-X

PILLOWS

WIND SCREEN

EVENT BARRIER COVER

■ ZEN ALUMINIUM FRAMES

BASIC

BASIC BLACK

SIMPLE

SIMPLE BOLD

DOUBLE

BACKLIGHT 100

BACKLIGHT DOUBLE

■ CARDBOARD STANDS

■ BOXES E-COMMERCE

INSTANT PACKAGING

FAST FOLDING CARDBOARDS

ROLLBOXES

CARDBOARD ENVELOPES

■ LABELS

■ SPATIAL LETTERS

■ LARGE FORMAT

ADVERTISING BANNERS

TEXTILES MATERIALS

STIFF MATERIALS

ADVERTISING FILMS

PAPERS

■ ADDITIONAL SERVICES



BEACH FLAGS

PORTABLE SYSTEMS

Whether on a beach, on a snowy-covered slope, in a shopping centre or in a fair area, flags are excellent, universal and easily noticeable advertising media. They are a great complement to external advertising campaigns, being especially suited as an independent, effective and inexpensive form of advertisement. The selection of various shapes, a few mast heights, countless base types or finishing techniques in our offer are the reason why you will orders flags which perfectly meet your needs.

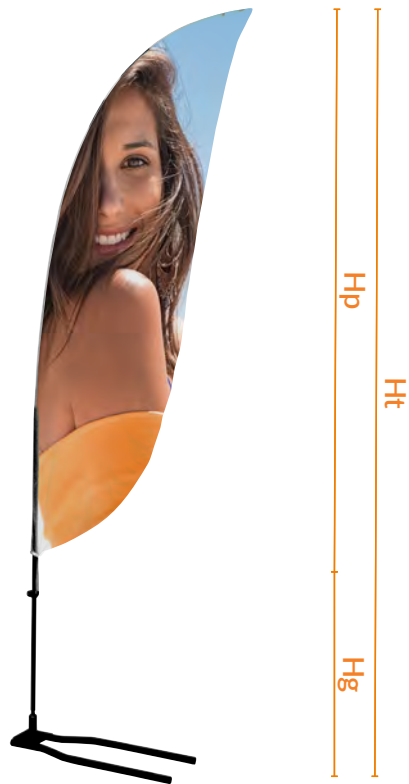
← [back to the content page](#)



FLAG CREST

PORTABLE SYSTEMS

← [back to the content page](#)



Information

Dimensions [cm]:

Mast	total height [Ht]	from ground [Hg]	visible area [Hp]
S(2,8)	55 x 255	60	55 x 195
M(3,4)	60 x 310	55	60 x 255
L(4,5)	78,5 x 388	53	78,5 x 335
XL(5,6)	85 x 452	67	85 x 385

Possible options:

- 4+0 - single-sided, Poly 115g
- 4+4 - double-sided, Blackback PRO

Details

STANDARD MAST (aluminum + fibre glass) +
FLAG (with graphics penetration to the other side, polyester
115 g/m²) -
IMPORTANT the set height depends on the flag shape (Feather/
Crest/Quill)

STANDARD MAST (aluminum + fibre glass) +
FLAG (different graphics depending on the side 2x Blackback
PRO) -
IMPORTANT the set height depends on the flag shape (Feather/
Crest/Quill)

The images in the catalogue are for illustrative purposes only and the appearance of individual accessories may vary throughout the year, depending on availability.



From 25,00 EUR/pcs.





FLAG FEATHER

PORTABLE SYSTEMS

← [back to the content page](#)



Information

Dimensions [cm]:

Mast	total height [Ht] from ground [Hg]	visible area [Hp]
S(2,8)	55 x 255	60
M(3,4)	60 x 310	55
L(4,5)	80 x 393	53
XL(5,0)	85 x 447	67

Possible options:

- 4+0 - single-sided, Poly 115g
- 4+4 - double-sided, Blackback PRO

Details

STANDARD MAST (aluminum + fibre glass) +
 FLAG (with graphics penetration to the other side, polyester 115 g/m2) -
 IMPORTANT the set height depends on the flag shape (Feather/Crest/Quill)

STANDARD MAST (aluminum + fibre glass) +
 FLAG (different graphics depending on the side 2x Blackback PRO) -
 IMPORTANT the set height depends on the flag shape (Feather/Crest/Quill)

The images in the catalogue are for illustrative purposes only and the appearance of individual accessories may vary throughout the year, depending on availability.



From 25,00 EUR/pcs.

FLAG QUILL

PORTABLE SYSTEMS

← [back to the content page](#)



The images in the catalogue are for illustrative purposes only and the appearance of individual accessories may vary throughout the year, depending on availability.



Information

Dimensions [cm]:

Mast	total height [Ht]	from ground [Hg]	visible area [Hp]
S(2,8)	76 x 236	60	76 x 176
M(3,4)	97 x 297	55	97 x 224
L(4,5)	121 x 344	53	121 x 291
XL(5,0)	139 x 432	67	139 x 365

Possible options:

- 4+0 - single-sided, Poly 115g
- 4+4 - double-sided, Blackback PRO

Details

STANDARD MAST (aluminum + fibre glass) +
FLAG (with graphics penetration to the other side, polyester
115 g/m2) -
IMPORTANT the set height depends on the flag shape (Feather/
Crest/Quill)

STANDARD MAST (aluminum + fibre glass) +
FLAG (different graphics depending on the side 2x Blackback
PRO) -
IMPORTANT the set height depends on the flag shape (Feather/
Crest/Quill)



From 25,00 EUR/pcs.



FLAG PREMIUM SQUARE

PORTABLE SYSTEMS

← [back to the content page](#)



Information

Dimensions [cm]:

Mast	total height [Ht]	from ground [Hg]	visible area [Hp]
S(3,05)	72 x 315	60	72 x 255
M(3,65)	82 x 360	55	82 x 305
L(4,0)	92 x 398	53	92 x 345

Possible options:

- 4+0 - single-sided, Poly 115g
- 4+4 - double-sided, Blackback PRO

Details

PREMIUM MAST (aluminum) +
 FLAG (with graphics penetration to the other side, polyester 115 g/m2) -
 IMPORTANT the set height depends on the flag shape (Square Curved)

PREMIUM MAST (aluminum) +
 FLAG (different graphics depending on the side, 2x Blackback PRO) -
 IMPORTANT the set height dependant on the flag shape (Square/Curved)

The images in the catalogue are for illustrative purposes only and the appearance of individual accessories may vary throughout the year, depending on availability.



From 42,00 EUR/pcs.



FLAG PREMIUM CURVED

PORTABLE SYSTEMS

[← back to the content page](#)



Information

Dimensions [cm]:

Mast	total height [Ht]	from ground [Hg]	visible area [Hp]
S(2,5)	62 x 265	60	57,9 x 223,7
M(3,35)	90 x 345	55	80,5 x 297,5
L(4,25)	90 x 433	53	82,5 x 389,2

Possible options:

- 4+0 - single-sided, Poly 115g
- 4+4 - double-sided, Blackback PRO

Details

PREMIUM MAST (aluminum) +
 FLAG (with graphics penetration to the other side, polyester 115 g/m2) -
 IMPORTANT the set height depends on the flag shape (Square Curved)

PREMIUM MAST (aluminum) +
 FLAG (different graphics depending on the side, 2x Blackback PRO) -
 IMPORTANT the set height dependant on the flag shape (Square/Curved)

The images in the catalogue are for illustrative purposes only and the appearance of individual accessories may vary throughout the year, depending on availability.



From 35,00 EUR/pcs.



BEACH FLAGS

ACCESSORIES

← [back to the content page](#)

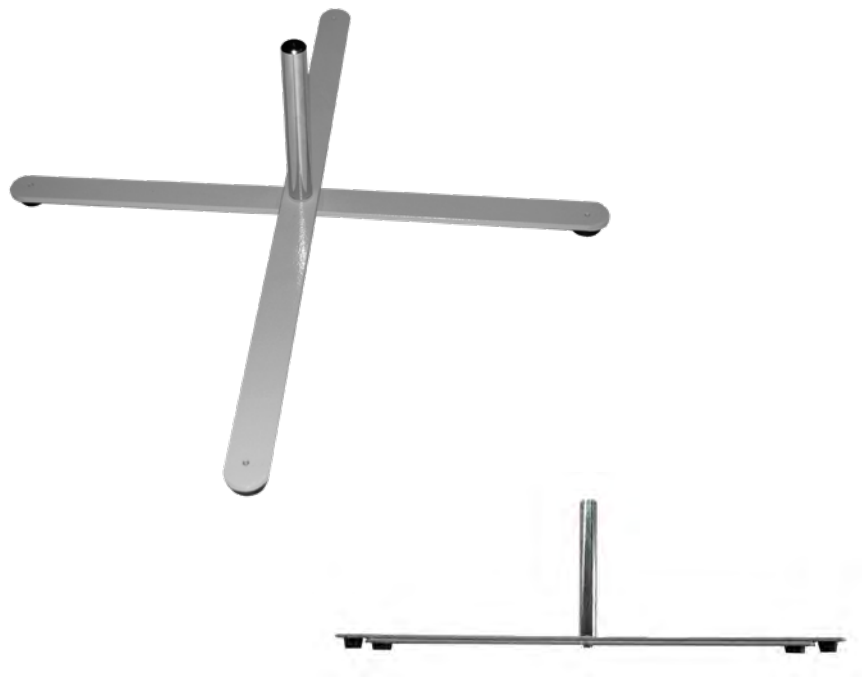




SMALL CROSS BASE

ACCESSORIES

← [back to the content page](#)



Information

Dimensions [cm]:
(width x depth x height)
48 x 48 x 20

Weight[kg]
0,9

Weight+ pack.[kg]
1,1

Logistical dimensions[mm]
(width x depth x height)
4,3 x 3,5 x 51

Packaging material
cardboard tube

Details

A light cross to be put in „not-too-windy“ zones or indoors, on a flat surface

Base for beach flags are made of steel. Surface is covered with spray paint. A light cross intended for the presentation of masts with S-type flags in low-wind areas on flat terrain. In addition, we can charge the cross with a water wheel.

The images in the catalogue are for illustrative purposes only and the appearance of individual accessories may vary throughout the year, depending on availability.



From 12,00 EUR/pcs.



LARGE CROSS BASE

ACCESSORIES

← [back to the content page](#)



Information

Dimensions [cm]:
(width x depth x height)

65,5 x 81,5 x 22

Weight[kg]

1,4

Weight+ pack.[kg]

1,8

Logistical dimensions[mm]

(width x depth x height)

21 x 4 x 84

Packaging material

cardboard tube

Details

A cross to be put indoors or on a flat surface in "not-too-windy" zones.

The base for beach flags is made of steel covered with spray paint. This light cross is intended for presenting M, L and XL flags in interiors or low-wind areas on flat terrain. In addition, we can charge the cross with a water wheel.

The images in the catalogue are for illustrative purposes only and the appearance of individual accessories may vary throughout the year, depending on availability.



From 16,00 EUR/pcs.



PREMIUM CROSS BASE

ACCESSORIES

← [back to the content page](#)



Information

Dimensions [cm]:
(width x depth x height)
62 x 72 x 6

Weight[kg]
3,2

Weight+ pack.[kg]
3,5

Logistical dimensions[mm]
(width x depth x height)
75 x 7 x 7

Packaging material
cardboard tube

Details

Heavy cross made of solid, spray painted steel flat. The base is designed for Standard and Premium masts in any size. The crosshead is equipped with a movable rotator.

The base is dedicated to interiors and external conditions, in zones with medium wind effects.

The images in the catalogue are for illustrative purposes only and the appearance of individual accessories may vary throughout the year, depending on availability.



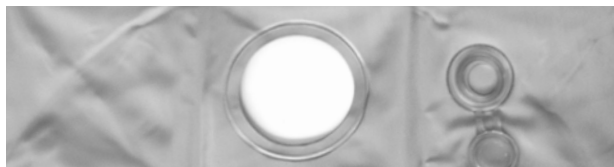
From 21,00 EUR/pcs.



WEIGHTNING RING BASE

ACCESSORIES

← [back to the content page](#)



Information

Dimensions [cm]:
(width x depth x height)
52 x 52 x 17

Weight[kg]
0,18

Weight+ pack.[kg]
0,35

Logistical dimensions[mm]
(width x depth x height)
15 x 15 x 3

Packaging material
cardboard tube

Details

The plastic wheel for filling with water or sand serves as an additional weight mainly for the cross-type foundation.

The images in the catalogue are for illustrative purposes only and the appearance of individual accessories may vary throughout the year, depending on availability.



From 5,50 EUR/pcs.



PLASTIC GROUND STAKE

ACCESSORIES

← [back to the content page](#)



Information

Dimensions [cm]:
(width x depth x height)
11,5 x 11,5 x 58,5

Weight[kg]
0,6

Weight+ pack.[kg]
0,9

Logistical dimensions[mm]
(width x depth x height)
13,5 x 13,5 x 60,5

Packaging material
cardboard tube

Details

A base for all types of flags, to be used in the sand or snow.

The images in the catalogue are for illustrative purposes only and the appearance of individual accessories may vary throughout the year, depending on availability.



From 22,00 EUR/pcs.



GROUND SPIKE BASE

ACCESSORIES

← [back to the content page](#)



Information

Dimensions [cm]:
(width x depth x height)
60 x 5,5 x 4

Weight[kg]
0,8

Weight+ pack.[kg]
1

Logistical dimensions[mm]
(width x depth x height)
6,5 x 5 x 62

Packaging material
cardboard tube

Details

The base is designed for S, M, L and XL masts. A solid metal base with a rotator is suitable for driving into a compact floor .

The images in the catalogue are for illustrative purposes only and the appearance of individual accessories may vary throughout the year, depending on availability.



From 12,50 EUR/pcs.



DRIVE-ON CAR-FOOT BASE

ACCESSORIES

[← back to the content page](#)



Information

Dimensions [cm]:
(width x depth x height)
56,5 x 33 x 15

Weight[kg]
1,5

Weight+ pack.[kg]
1,9

Logistical dimensions[mm]
(width x depth x height)
60 x 34 x 5

Packaging material
cardboard tube

Details

The base is designed for S, M, L and XL. It is a type of inrun base with solid metal construction. The product is sold together with a durable metal rotator.

The images in the catalogue are for illustrative purposes only and the appearance of individual accessories may vary throughout the year, depending on availability.



From 18,50 EUR/pcs.



OUTDOOR WATER BASE

ACCESSORIES

← [back to the content page](#)



The images in the catalogue are for illustrative purposes only and the appearance of individual accessories may vary throughout the year, depending on availability.



Information

Dimensions [cm]:
(width x depth x height)
11,5 x 11,5 x 58,5

Weight[kg]
1,5

Weight+ pack.[kg]
1,9

Logistical dimensions[mm]
(width x depth x height)
47 x 47 x 18

Packaging material
cardboard tube

Details

A plastic base to be filled with water for greater weight.
Volume: 20 litres.



From 15,50 EUR/pcs.

SQUARE BASE 40

ACCESSORIES

← [back to the content page](#)



The images in the catalogue are for illustrative purposes only and the appearance of individual accessories may vary throughout the year, depending on availability.



Information

Dimensions [cm]:
(width x depth x height)
40 x 40 x 2

Weight[kg]
6

Weight+ pack.[kg]
7,1

Logistical dimensions[mm]
(width x depth x height)
41,5 x 41,5 x 5

Packaging material
cardboard tube

Details

A metal base (6kg) for flat surfaces, not exposed to wind activity, for all types of flag

Powder coated metal base used for the installation of all flag sizes. Has a rotating mechanism. You can weight it down with a water weighting ring. Also available a carry bag from a waterproof material - ask your contact person for more details. The base is self-assembly.



From 27,00 EUR/pcs.

PREMIUM SQUARE BASE 15

ACCESSORIES

← [back to the content page](#)



The images in the catalogue are for illustrative purposes only and the appearance of individual accessories may vary throughout the year, depending on availability.



Information

Dimensions [cm]:
(width x depth x height)
50 x 50 x 2

Weight[kg]
15

Weight+ pack.[kg]
15,7

Logistical dimensions[mm]
(width x depth x height)
53 x 53 x 10

Packaging material
cardboard tube

Details

A heavy metal base for all types of flags, for flat surfaces in zones with moderate and strong wind activity.

Metal base spray painted. It is designed for Standard and Premium masts in any size. The base is equipped with a movable rotator. Weight: 15kg.

It is dedicated to flat surfaces both in interiors and in outdoor conditions with medium and higher wind effects.



From 65,00 EUR/pcs.



PREMIUM SQUARE BASE 20

ACCESSORIES

[← back to the content page](#)



Information

Dimensions [cm]:
(width x depth x height)
50 x 50 x 2

Weight[kg]
20

Weight+ pack.[kg]
20,6

Logistical dimensions[mm]
(width x depth x height)
53 x 53 x 10

Packaging material
cardboard tube

Details

A heavy metal base for all types of flags, for flat surfaces in zones with moderate and strong wind activity.

Metal base spray painted. It is designed for Standard and Premium masts in any size. The base is equipped with a movable rotator. Weight: 20kg.

It is dedicated to flat surfaces both in interiors and in outdoor conditions with medium and higher wind effects.

The images in the catalogue are for illustrative purposes only and the appearance of individual accessories may vary throughout the year, depending on availability.



From 85,00 EUR/pcs.



RUBBER BASE 5

ACCESSORIES

[← back to the content page](#)



Information

Dimensions [cm]:
(width x depth x height)
50 x 50 x 5

Weight[kg]
9,7

Weight+ pack.[kg]
10,2

Logistical dimensions[mm]
(width x depth x height)
51,5 x 51,5 x 10

Packaging material
cardboard tube

Details

A rubber base (thickness 5cm, 10kg) for all sizes of masts. Equipped with a rotator fixed in 4 points to the base. The base can be loaded down with a weighting ring.

The images in the catalogue are for illustrative purposes only and the appearance of individual accessories may vary throughout the year, depending on availability.



From 45,00 EUR/pcs.



RUBBER BASE 8

ACCESSORIES

[← back to the content page](#)



Information

Dimensions [cm]:
(width x depth x height)
50 x 50 x 8

Weight[kg]
14,1

Weight+ pack.[kg]
14,7

Logistical dimensions[mm]
(width x depth x height)
51,5 x 51,5 x 13

Packaging material
cardboard tube

Details

A rubber base (thickness 8cm, 10kg) for all sizes of masts. Equipped with a movable rotator fitted in 4 points to the base. The base can be loaded down with a weighting ring.

The images in the catalogue are for illustrative purposes only and the appearance of individual accessories may vary throughout the year, depending on availability.



From 58,50 EUR/pcs.



BEACHFLAG BAG STANDARD

ACCESSORIES

[← back to the content page](#)



Information

Dimensions [cm]:
(width x depth x height)
128 x 22,5

Weight[kg]
0,3

Weight+ pack.[kg]
0,7

Logistical dimensions[mm]
(width x depth x height)
30 x 30 x 7

Packaging material
Waterproof polyester

Details

A bag made of waterproof polyester, equipped with a zip and 2 handles made of a thick polyester band.

The images in the catalogue are for illustrative purposes only and the appearance of individual accessories may vary throughout the year, depending on availability.



From 9,00 EUR/pcs.



BAG FOR PREMIUM CURVED MAST

ACCESSORIES

[← back to the content page](#)



Information

Dimensions [cm]:
(widt. x dept. x heig.)
128 x 24

Weight[kg]
0,3

Weight+ pack.[kg]
0,5

Logistical dimensions[mm]
(widt. x dept. x heig.)
30 x 30 x7

Packaging material
Waterproof polyester

Details

Carrying bag made of one layer of waterproof polyester, finished a zipper and two handles made a durable polyester tape. The bag has 3 compartments for the straight mast modules, and two pairs of velcro strips for securing the curved mast elements. The bag can also contain beachflag bases such as large cross, premium cross base, plastic ground stake or metal ground spike.

The images in the catalogue are for illustrative purposes only and the appearance of individual accessories may vary throughout the year, depending on availability.



From 10,50 EUR/pcs.



BAG FOR SQUARE BASE 40

ACCESSORIES

[← back to the content page](#)



Information

Dimensions [cm]:
(width x depth x height)
43 x 46

Weight[kg]
0,14

Weight+ pack.[kg]
0,3

Logistical dimensions[mm]
(width x depth x height)
25 x 25 x 5

Packaging material
Waterproof polyester

Details

Single-layer bag made of waterproof polyester equipped with a zip and 2 handles from a thick polyester tape. Designed to carry the square base 0.40x0.40m.

The images in the catalogue are for illustrative purposes only and the appearance of individual accessories may vary throughout the year, depending on availability.



From 7,00 EUR/pcs.



MAST FLAGS

CONFECTION

Do you present your company at fairs? Are you planning an outdoor event? Your exhibition space is small or maybe you display your goods on pallets? If you need a tent, a cover for EURO pallet, a perfect and comfortable counter or roll-ups or an instant pop-up, check our special offer!

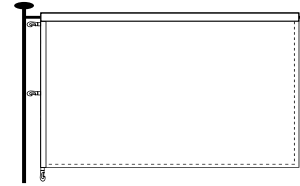
[← back to the content page](#)





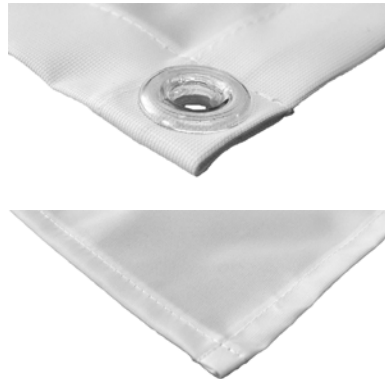
TYPE 1

Top - 5 cm open sleeve (measured flat)
Bottom - stitched
Left side - reinforcing strip with carabine hooks each 50cm
Right side - stitched



TYPE 2

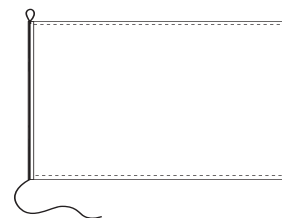
Top - sewn in reinforcing tape, eyelets each 50 cm
Bottom - stitched
Left side - reinforcing tape sewn in, eyelets each 50 cm
Right side - stitched





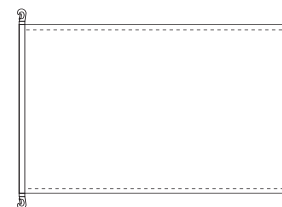
TYPE 3

Top - stitched
Bottom - stitched
Left side - sleeve with a hidden rope
(top - loop, bottom - sewn-in rope, 40 cm long)
Right side - stitched



TYPE 4

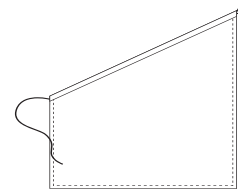
Top - stitched
Bottom - stitched
Left side - strip with carabine hooks
on top and bottom
Right side - stitched





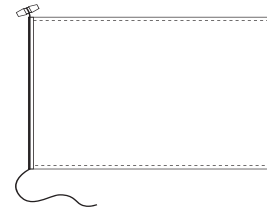
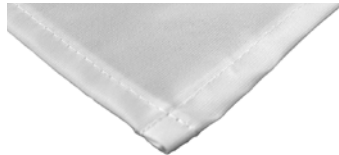
TYPE 5

Top – 5 cm sleeve (measured flat) with a sewn-in rope
(top – loop, bottom – sewn-in rope, 40 cm long)
Bottom – stitched
Left side – stitched
Right side – stitched



TYPE 6

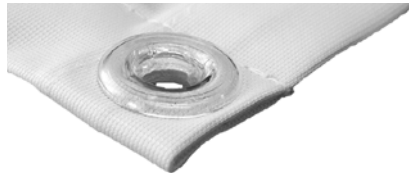
Top – sewn in reinforcing tape, eyelets in top corners
Bottom – stitched
Left side – stitched
Right side – stitched





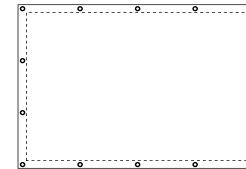
TYPE 7

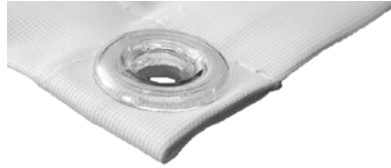
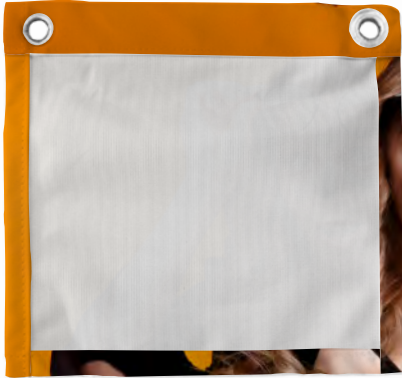
Top - stitched
Bottom - stitched
Left side - stitched
Right side - stitched



TYPE 8

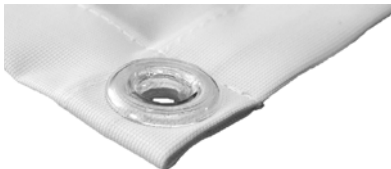
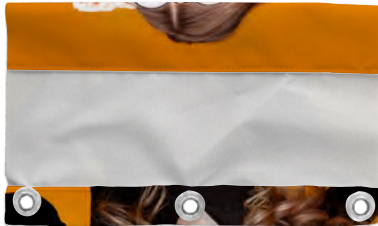
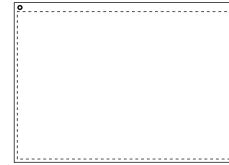
Top - sewn in 3 cm reinforcing tape, eyelets each 50 cm
Bottom - sewn in 3 cm reinforcing tape, eyelets each 50 cm
Left side - sewn in 3 cm reinforcing tape, eyelets each 50 cm
Right side - sewn in 3 cm reinforcing tape, eyelets each 50 cm





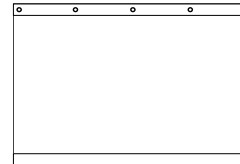
TYPE 9

Top - sewn in reinforcing tape, eyelets in top corners
Bottom - stitched
Left side - stitched
Right side - stitched



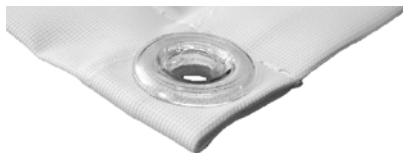
TYPE 10

Top - sewn in reinforcing tape, eyelets each 50 cm
Bottom - 5 cm sleeve (measured flat)
Left side - cut to size
Right side - cut to size





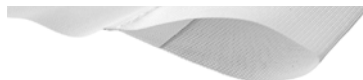
TYPE 11



Top – sewn-in reinforcing tape, eyelets in corners
Bottom – sewn-in reinforcing tape, eyelets in corners
Left side – sewn-in reinforcing tape, eyelets in corners
Right side – sewn-in reinforcing tape, eyelets in corners



TYPE 12



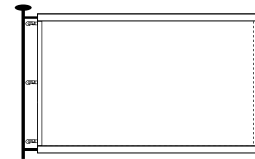
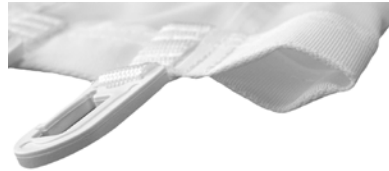
Top – 5 cm sleeve (measured flat)
Bottom – cut to size
Left side – cut to size
Right side – cut to size





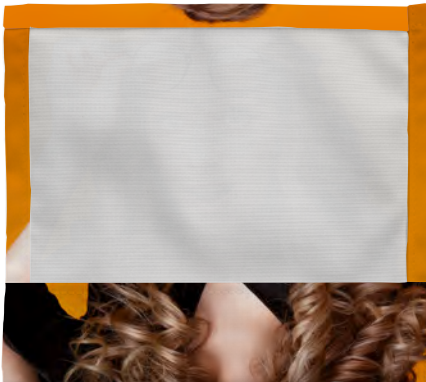
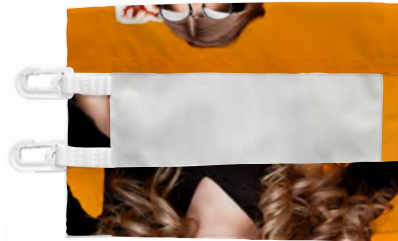
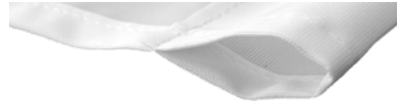
TYPE 13

Top - 5 cm open sleeve (measured flat)
Bottom - 5 cm open sleeve (measured flat)
Left side - reinforcing strip with carabine hooks each 50cm
Right side - stitched



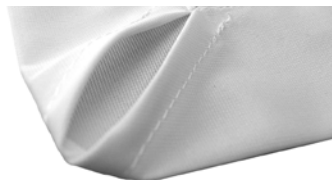
TYPE 14

Top - stitched
Left side - 5 cm sleeve (measured flat)
Bottom - stitched
Right side - stitched

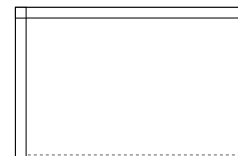




TYPE 15



Top – 5 cm sleeve (measured flat), closed on the right side
Left side – 5 cm sleeve (measured flat)
Bottom – stitched
Right side – stitched



TYPE 16



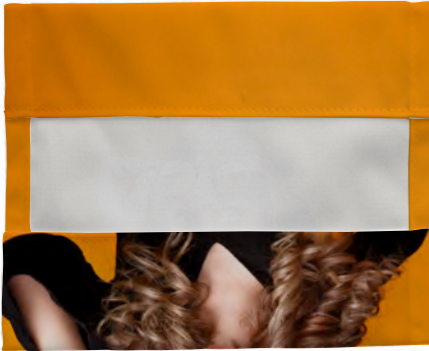
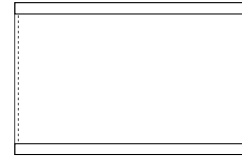
Top – stitched
Left side – tape with carabine hooks each 50 cm
Bottom – stitched
Right side – stitched





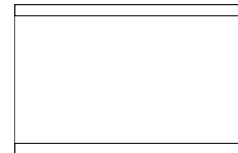
TYPE 17

Top - 5 cm sleeve (measured flat)
Left side - stitched
Bottom - 5 cm sleeve (measured flat)
Right side - stitched



TYPE 18

Top - 5 cm sleeve (measured flat)
Bottom - 5 cm sleeve (measured flat)
Left side - cut to size
Right side - cut to size





SPECIAL OFFER

Do you present your company at fairs? Are you planning an outdoor event? Your exhibition space is small or maybe you display your goods on pallets? If you need a tent, a cover for EURO pallet, a perfect and comfortable counter or roll-ups or an instant pop-up, check our special offer!

← [back to the content page](#)





EURO TEXTILE COVER INDOOR/OUTDOOR

SPECIAL OFFER

← [back to the content page](#)



Information

Dimensions [cm]:
(width x depth x height)
120 x 80 x 14

Weight[kg]
0,7

Weight+ pack.[kg]
0,8

Logistical dimensions[mm]
(width x depth x height)
45 x 40 x 5

Packaging material
cardboard tube

Details

Aesthetic cover for a standard EURO pallet (EUR, EUR 1, EPAL - 120 x 80 x 14.4 cm). Perfect for commercial chains that sell directly from pallets. The applied design allows to cover the entire platform, including the upper boards, thereby increasing the advertising area. Covers are made of high quality textile materials, allowing for excellent quality of print.

There are 2 options to choose from - INDOOR and OUTDOOR cover.

INDOOR - material: Polyester 210g. It is a budget solution for this product.

OUTDOOR - material: TENT, which is characterised by high gramature and rich saturation of colours. The acrylic coating guarantees the water resistance of the product.

The images in the catalogue are for illustrative purposes only and the appearance of individual accessories may vary throughout the year, depending on availability.



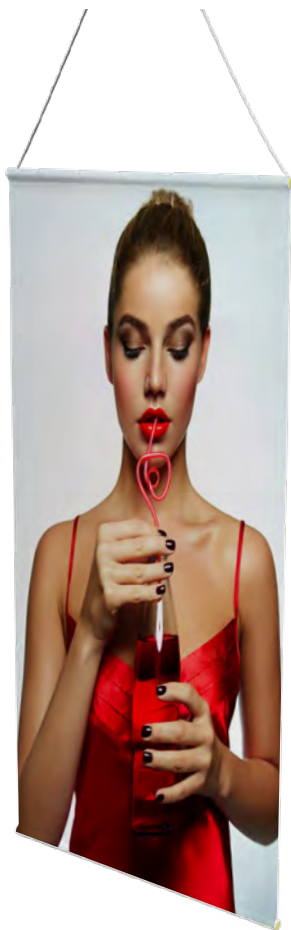
From 24,00 EUR/pcs.



KAKEMONO

SPECIAL OFFER

← [back to the content page](#)



Information

Product	Dimensions [cm]	Logistic dimensions [mm]	Weight [kg]	Weight+ pack. [kg]
Blockout 440g 4+4	80 x 200	10 x 10 x 83	1,2	1,29
	80 x 180	10 x 10 x 83	1,1	1,22
Polyester 210g	80 x 200	10 x 10 x 83	0,8	0,89
	80 x 180	10 x 10 x 83	0,8	0,92

Details

Kakemono is a hanging print with 20mm diameter wooden poles, sewn securely into the top and bottom edges. The product comes in two sizes: 0.8x2m and 0.8x1.8m and two material versions. The 210g polyester is a thin, airy and lightweight material, while the 440g blockout is a thicker, vinyl material that allows double-sided printing with non-interlocking graphics.

Standard product finishing, included in the price, is for both materials:

Top and bottom sleeve sewn with Ø20mm poles + cord (160cm) attached to the top edge. Sides: cut to size

The images in the catalogue are for illustrative purposes only and the appearance of individual accessories may vary throughout the year, depending on availability.



From 14,90 EUR/pcs.



TENT

SPECIAL OFFER

[← back to the content page](#)



Information

Dimensions [cm]	Weight [kg]	Material
300 x 300 x 300	27	Tent 280g/m ²
300 x 450 x 300	34	Tent 280g/m ²
300 x 600 x 300	44	Tent 280g/m ²

Details

A promotional tent is a other product for outdoor events and any others which require fast roofing of the surface. It can be easily used as an interesting fair stand or its equipment component. Our tents give a wide range of wall configurations and possibilities to place any graphics on their external surfaces. The tent is available in two basic sizes. Big and small tent walls can be arranged together in many ways. Ask a consultant for more sizes and possibilities. The set includes: a robust aluminium tent frame from hexagonal cross-section profiles, a practical transport bag, a set of four pins and the additional hammer. The roof also gives an opportunity to print of a graphics. Both the roof and walls are made of waterproof material.

The images in the catalogue are for illustrative purposes only and the appearance of individual accessories may vary throughout the year, depending on availability.



From 499,00 EUR/pcs.



TENT

SPECIAL OFFER

← [back to the content page](#)



Details

The tent frame is made of aluminium, with a double hexagonal profile (the outer profile is 40x40x1mm; the inner profile 35x35x1mm). If the tent cannot be mounted with pins to the ground, you can choose 7,50kg concrete weights.

The basic set includes:

- construction
- frame of the tent
- printed with desired graphics, waterproof roof
- a bag with a steel reinforced bottom
- a set of 4 mounting pegs with extra ropes
- a hammer to help drive the pegs into the ground.

The frame can be equipped with walls:

"high" (h-2,10m)

and/or "low" (h-0.78m)

Walls with any graphic are made of waterproof material"

Suggested number of people to assemble - 2.

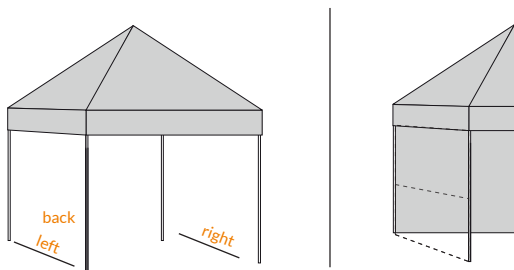
Dimensions [cm]	Weight [kg]	Weight+ pack.[kg]	Logistic dimensions [mm]	Material
300 x 300 x 300	27	29	159 x 26 x 26	Tent 280g/m ²
300 x 450 x 300	34	36	159 x 26 x 26	Tent 280g/m ²
300 x 600 x 300	44	47	30 x 30 x 7	Tent 280g/m ²



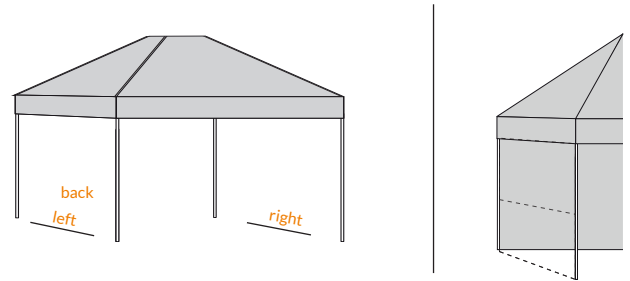
TENT

SPECIAL OFFER

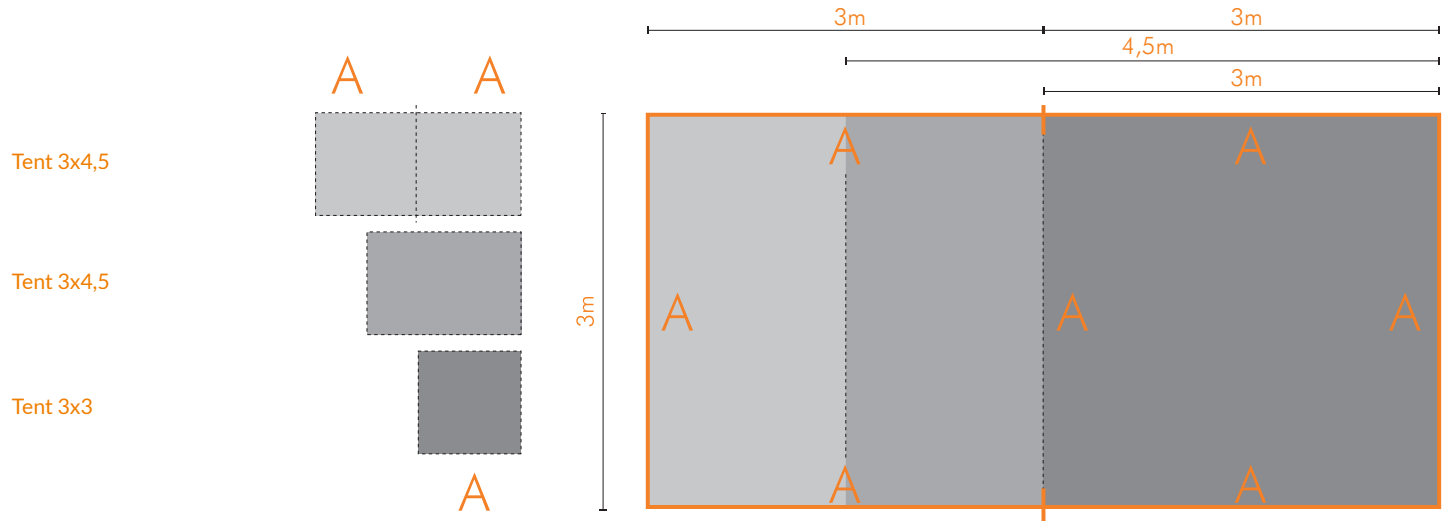
← [back to the content page](#)



Tent 3x3



Tent 3x4,5



POP-UP SANDWICH

SPECIAL OFFER

← [back to the content page](#)



Information

Dimensions [cm]	Logistic dimensions [mm]	Weight+ pack. [kg]	Weight [kg]	Material
120 x 70	20 x 86 x 10	2,3	2,1	Polyester 210g
180 x 115	86 x 86 x 10	2,8	2,6	Polyester 210g
200 x 100	86 x 86 x 10	2,8	2,6	Polyester 210g
250 x 100	105 x 95 x 10	3,8	3,5	Polyester 210g

Details

An unusual structure made of glass fibre, perfect to display advertising content both in internal and external conditions. The set includes galvanized pins to fix the structure on the ground, as well as a comfortable promotional bag. The graphics made in sublimation technology on polyester fabric 210g/m². The product instantly put up, compact, perfect for all outdoor events!

The images in the catalogue are for illustrative purposes only and the appearance of individual accessories may vary throughout the year, depending on availability.

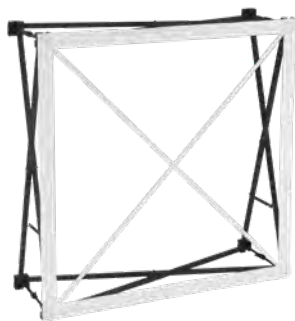


From 65,59 EUR/pcs.

YUKA COUNTER

SPECIAL OFFER

← [back to the content page](#)



Information

Dimensions [cm]:
(width x depth x height)
100 x 100 x 35

Weight[kg]
11,1

Weight+ pack.[kg]
11,6

Logistical dimensions[mm]
(width x depth x height)
20 x 46 x 110

Packaging material
Blackback pro* /Black top

Details

A foldable, light counter suitable for mobile displays. The frame is made of aluminium alloys, thanks to which it is exceptionally robust and light at the same time. Equipped with a foldable black countertop and an internal plastic shelf which can serve as a handy tray for marketing materials. Print on blackback material (no show-through effect). The countertop is packed in a durable textile bag, which facilitates its transport and storage to a great extent. All you need at hand!

The images in the catalogue are for illustrative purposes only and the appearance of individual accessories may vary throughout the year, depending on availability.



From 185,00 EUR/pcs.



ROLL-UP SUNA ECONOMIC

SPECIAL OFFER

← [back to the content page](#)



Information

Packaging material
cardboard tube

Dimensions [cm]	Logistic dimensions [mm]	Dimensions of the cassette [cm]	Flat legs [35x4.3x0.7cm]	Weight [kg]	Weight+ pack.[kg]
85 x 200	11,5 x 11,5 x 91	87 x 9,4 x 8,7	2 pcs	2,8	3
100 x 200	11,5 x 11,5 x 106	102 x 9,4 x 8,7	2 pcs	3,3	3,2

Details

Roll-up Suna Economic is the budget alternative to the popular Roll-up Suna advertising system. The new model retains high design quality at an attractive price, making it perfect for customers looking for an effective and affordable advertising solution.

The material used for printing is high-quality Frontlight 450g/m². The kit also includes a cassette, 2 stabilising feet, an aluminium mast and a carry bag.



The images in the catalogue are for illustrative purposes only and the appearance of individual accessories may vary throughout the year, depending on availability.



From 28,25 EUR/pcs.



ROLL-UP SUNA

SPECIAL OFFER

← [back to the content page](#)



Information

Packaging material
cardboard tube

Dimensions [cm]	Logistic dimensions [mm]	Dimensions of the cassette [cm]	Flat legs [35x4.3x0.7cm]	Weight [kg]	Weight+ pack.[kg]
85 x 200	11,5 x 11,5 x 91	87 x 9,4 x 8,7	2 pcs	2,8	3
100 x 200	11,5 x 11,5 x 106	102 x 9,4 x 8,7	2 pcs	3,3	3,2

Details

A basic and extremely popular roll-up model. It has two rotatable stabilizing legs and an aluminium cassette. A transport bag is included in the set. We recommend a roll-up film, pp foil with grey back.

Aluminium roll-up panel which houses the image, with 2 rotating feet. The image is pulled out of the panel and affixed using the 3-component aluminium mast. An attractive storage bag is included in the price.



The images in the catalogue are for illustrative purposes only and the appearance of individual accessories may vary throughout the year, depending on availability.



From 29,00 EUR/pcs.



ROLL-UP MIZU

SPECIAL OFFER

← [back to the content page](#)



Information

Packaging material
cardboard tube

Dimensions [cm]	Logistic dimensions [mm]	Dimensions of the cassette [cm]	Flat legs [35x4.3x0.7cm]	Weight [kg]	Weight+pack.[kg]
85 x 200	13 x 13 x 91	86,5 x 9 x 8,7	2 pcs	4,1	4,3
100 x 200	13 x 13 x 106	101,5 x 9 x 8,7	2 pcs	4,5	4,7
120 x 200	13 x 13 x 126	121,5 x 9 x 8,7	2 pcs	5,2	5,4
150 x 200	13 x 13 x 156	151,5 x 9 x 8,7	2 pcs	6,5	6,7
200 x 200	13 x 13 x 206	201,5 x 9 x 8,7	2 pcs	7,7	7,9

Details

Heavier and more stable than the SUNA basic version. The cassette is made of thick aluminium on two rotatable legs. A padded transport bag additionally protects the product during transport. We recommend a roll-up film, pp foil with grey back or blockout 440g, material with white back and black blocking inlayer.



The images in the catalogue are for illustrative purposes only and the appearance of individual accessories may vary throughout the year, depending on availability.



From 38,00 EUR/pcs.



ROLL-UP KAZE

SPECIAL OFFER

← [back to the content page](#)



Information

Packaging material
cardboard tube

Dimensions [cm]	Logistic dimensions [mm]	Dimensions of the cassette [cm]	Weight [kg]	Weight+ pack.[kg]
85 x 200	26 x 10 x 96	20 x 8 x 90	4,1	4,3
100 x 200	26 x 10 x 111	20 x 8 x 105	4,5	4,7

Details

Banner roll-up system, tear-shaped in cross-section. Adjustable base enables the system to be installed on uneven surfaces. The set includes a premium-quality internally lined bag for transporting the system, which protects the system and ensures its durability.



The images in the catalogue are for illustrative purposes only and the appearance of individual accessories may vary throughout the year, depending on availability.



From 81,00 EUR/pcs.



X-BANNER

SPECIAL OFFER

← [back to the content page](#)



The images in the catalogue are for illustrative purposes only and the appearance of individual accessories may vary throughout the year, depending on availability.



Information

Packaging material
cardboard tube

Dimensions [cm]	Logistic dimensions [mm]	Poids avec emballage sans graphisme [kg]
60 x 160	125 x 15 x 5	1,6
80 x 180	125 x 15 x 5	1,7

Details

A widely known and liked advertising display. A simple foldable construction and instantly replaceable graphics constitute the main advantages of the product. The print is finished with eyeholes in the corners. We recommend printing on the roll-up film or bloc out material 440g.



From 26,00 EUR/pcs.



ADVERTISING WALLS

Advertising walls are a perfect solution for those who want to display large graphics easily. Effective looks, a really simple construction to be mounted without any tools and a comfortable transport bag make our walls suitable for all environments.

← [back to the content page](#)

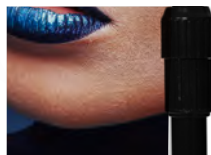




WALL

ADVERTISING WALLS

← [back to the content page](#)



Information

Dimensions [cm]:
(width x depth x height)
240 x 240

Weight[kg]
6,1

Suggested material
Polyester 210g

Weight+ pack.[kg]
7

Logistical dimensions[mm]
(width x depth x height)
142 x 20 x 20

Packaging material
cardboard tube

Details

A simple, economical and portable system to present graphics.

We offer printing on polyester 210g/m² (the material allows for obtaining an intensive colour palette and has M1 fire rating). An undeniable asset of the construction is the possibility to adjust its height and width thanks to telescopic tubes. A maximum graphics format is 2.4x2.4m. The wall is packed in a comfortable bag. For assembly, you only need a screwdriver, which is included in the set. If you need an a print on a special, non-standard material, ask a consultant.

The images in the catalogue are for illustrative purposes only and the appearance of individual accessories may vary throughout the year, depending on availability.



From 166,00 EUR/pcs.



EUROPE STRAIGHT

ADVERTISING WALLS

← [back to the content page](#)



Information

Dimensions [cm]:
(width x depth x height)
294 x 232

Weight[kg]
9,8

Suggested material
Stretch pro

Weight+ pack.[kg]
10,2

Logistical dimensions[mm]
(width x depth x height)
125 x 35 x 25

Packaging material
cardboard tube

Details

Aluminium structure onto which the print is pulled. Replacing the material is very easy, and the graphics can be changed frequently. Europe wall allows two-sided print area. The material used in the product does not have a blockage layer. When the wall is set up against the light, the elements of graphics can show through to the other side.

The images in the catalogue are for illustrative purposes only and the appearance of individual accessories may vary throughout the year, depending on availability.



From 361,00 EUR/pcs.



EUROPE HORIZONTAL

ADVERTISING WALLS

[← back to the content page](#)



Information

Dimensions [cm]:
(width x depth x height)
320 x 228

Weight[kg]
11,9

Suggested material
Stretch pro doublesided

Weight+ pack.[kg]
12,2

Logistical dimensions[mm]
(width x depth x height)
110 x 40 x 25

Packaging material
cardboard tube

Details

Aluminium structure onto which the print is pulled. Replacing the material is very easy, and the graphics can be changed frequently. Europe wall allows two-sided print area. The material used in the product does not have a blockage layer. When the wall is set up against the light, the elements of graphics can show through to the other side.

The images in the catalogue are for illustrative purposes only and the appearance of individual accessories may vary throughout the year, depending on availability.



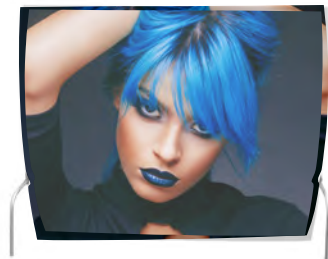
From 362,00 EUR/pcs.



EUROPE VERTICAL

ADVERTISING WALLS

[← back to the content page](#)



The images in the catalogue are for illustrative purposes only and the appearance of individual accessories may vary throughout the year, depending on availability.



Information

Dimensions [cm]:
(width x depth x height)
291 x 264

Weight[kg]
11,3

Suggested material
Stretch pro doublesided

Weight+ pack.[kg]
12

Logistical dimensions[mm]
(width x depth x height)
110 x 40 x 30

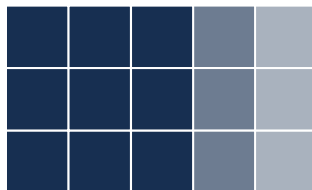
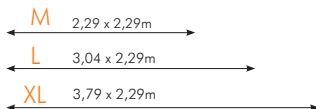
Packaging material
cardboard tube

Details

Aluminium structure onto which the print is pulled. Replacing the material is very easy, and the graphics can be changed frequently. Europe wall type allows two-sided print area.



From 363,00 EUR/pcs.



Information

Details

A spider-type wall allows for packing and installing the structure together with the fabric. No tools are necessary for the assembly. We offer prints on polyester 210g/m² (the material allows obtaining an intensive colour palette and has M1 fire rating). Easy print fixing with elcros significantly facilitates the graphics replacement. The wall construction can be reused multiple times. Yuka is stable thanks to its structure - it is 30cm deep and side walls 30cm wide create additional advertising surfaces. The wall is packed in a comfortable bag. If you need a print of non-standard features, ask a consultant.

ATTENTION! The product is especially appreciated by customers for its robust construction and possibility to be folded and transported without removing graphics.

Product	Dimensions [cm]	Material
Yuka M	307 x 234	
Yuka L	378 x 229	Poly 210g/Blackback PRO
Yuka XL	454 x 229	





EVENT OFFER

Festivals, beaches, picnics, any outdoor events as well as those in closed spaces. Anywhere where people are present it is worth arranging comfortable seats. Since we have another area to promote oneself, we are eager to help! We offer deckchairs, chairs, screens and various seats which will let you arrange a pleasant space for people, exactly as you want it.

[← back to the content page](#)





DIRECTOR'S CHAIR

EVENT OFFER

[← back to the content page](#)



Information

Dimensions [cm]:
(width x depth x height)

Seat - 43,5 x 40 / Backrest - 53 x 17

Weight[kg]

5,3

Weight+ pack.[kg]

5,6

Logistical dimensions[mm]

(width x depth x height)

82x60x18

Suggested material

Decor 240g/m2

Details

A director chair is an exceptional piece of furniture which will give every event the Hollywood glamour. The construction is made of solid wood. Print on waterproof material Decor 240g/m2 with an option of easy replacement on the seat and backrest. The graphics can be washed. Small sizes of the foldable construction make storage, transport and use easier. The chair is extremely light, it weighs less than 5kg!

Safe area [cm]

Seat - 37.5x37.5 / Backrest - 38.5 x 14.5

The images in the catalogue are for illustrative purposes only and the appearance of individual accessories may vary throughout the year, depending on availability.



From 68,00 EUR/pcs.



DECKCHAIR

EVENT OFFER

← [back to the content page](#)

Model 2:

Dimensions [cm]:

135x43

Logistic dimensions [mm]

(W x D x H)

1240 x590 x70



The images in the catalogue are for illustrative purposes only and the appearance of individual accessories may vary throughout the year, depending on availability.



Information

Weight[kg]

5

Weight+ pack.[kg]

5,2

Suggested material

Decor 240g/m2

Details

Probably every one of us had an opportunity to sit in a deckchair. The product is widely known liked, and perfect for summer events. A foldable wooden construction makes transport and storage comfortable. Replaceable graphics on waterproof material, Decor 240g/m2, it's easy to assemble and wash. A visible graphics format: 0.43x1.36m. You can order even 1 piece!



From 29,50 EUR/pcs.



DOUBLE DECKCHAIR

EVENT OFFER

← [back to the content page](#)



Information

Dimensions [cm]:
(widt. x dept. x heig.)
100 x 145

Weight[kg]
7

Weight+ pack.[kg]
7,2

Logistical dimensions[mm]
(widt. x dept. x heig.)
129 x 115 x 7

Suggested material
Decor 240g/m2

Details

Probably everyone has had the opportunity to sit on a deckchair at least once in a lifetime. A well-known, well-liked product, perfect for summer events. The foldable, wooden structure is convenient to transport and store. Removable graphics on the waterproof Decor 240 gsm fabric is easy to install and washable. Visible graphic format: 1.00 x 1,45 m. Orders from 1 piece!

The images in the catalogue are for illustrative purposes only and the appearance of individual accessories may vary throughout the year, depending on availability.



From 46,00 EUR/pcs.



BEAN BAG

EVENT OFFER

[← back to the content page](#)



Information

Packaging material

Foil

Product	Base dimension [cm]	Height [cm]	Weight per package[kg]	Printing technology	Suggested material
Small Bag	55x55	114	2,7	Sublimation	Decor 240g/m2
Big Bag	70x70	145	7	Sublimation	Decor 240g/m2

Details

Printed Bean Bags made of waterproof reinforced polyester knit - decor 240g/m2. Its case is equipped with a zipper. It allows easy and quick change of the cover. This is very useful when bean bag gets dirty and we need to wash it, for example after a weekend event. Inner polyester case is filled with polypropylene pellets. Ideal as an event advertisement.



The images in the catalogue are for illustrative purposes only and the appearance of individual accessories may vary throughout the year, depending on availability.



From 75,00 EUR/pcs.



BEAN BAG EGG

EVENT OFFER

← [back to the content page](#)



Information

Packaging material

Foil

Product	Base dimension [cm]	Height [cm]	Weight per package[kg]	Printing technology	Suggested material
Small Egg	119x145	20	4	Sublimation	Decor 240g/m2
Big Egg	150x180	20	7	Sublimation	Decor 240g/m2

Details

We print bean bags on waterproof material, Decor 240g/m2, in sublimation technology. You are free to personalize the product by using any graphics. Polystyrene pellets filling the bean bag are safely placed in an internal case, which ensures comfort and minimalizes the risk of spilling. The external case is equipped with a zip, which enables its easy removal and washing.

The images in the catalogue are for illustrative purposes only and the appearance of individual accessories may vary throughout the year, depending on availability.



From 75,00 EUR/pcs.



CUBE-X

EVENT OFFER

← [back to the content page](#)



Information

Dimensions [cm]:
(widt. x dept. x heig.)

45x45x45

Weight[kg]

4

Weight+ pack.[kg]

4,3

Logistical dimensions[mm]
(widt. x dept. x heig.)

34 x 25 x 10

Suggested material

Polyester 210g/m2

Details

A compact and comfortable foam cube, packed in a fancy zipped case, with a possibility to print with any graphics. The cube size is 45x45x45cm. PE foam filling of high density and resistance. The case is easily removable, made of polyester 210g/m2. Weighs about 3.5kg as a whole.



The images in the catalogue are for illustrative purposes only and the appearance of individual accessories may vary throughout the year, depending on availability.



From 67,00 EUR/pcs.



PILLOW

EVENT OFFER

[← back to the content page](#)

 **Match the filling as well!**



Information

Dimensions [cm]:
(widt. x dept. x heig.)
47 x 47 x 15

Weight[kg]
0,2

Weight+ pack.[kg]
0,3

Logistical dimensions[mm]
(widt. x dept. x heig.)
34 x 25 x 10

Packaging material
Textile backlight

Details

Pillow cases in two sizes can be found in our offer:
pillow case 40: 37x37cm;
pillow case 50: 47x47cm.
We offer pillow cases printed on elastic material with slight gloss. Neat finishing with a zip, easy to be washed.

Pillow

Size [cm]

50 (4+0)	Size 47 x 47 cm, print on one side
50 (4+4)	47 x 47 cm, print on 2 sides
40 (4+0)	37 x 37 cm, print on one side
40 (4+4)	37 x 37 cm, print on 2 sides

The images in the catalogue are for illustrative purposes only and the appearance of individual accessories may vary throughout the year, depending on availability.



From 13,00 EUR/pcs.



WIND SCREEN

EVENT OFFER

← [back to the content page](#)



Information

Dimensions [cm]:
(width x depth x height)
400x75

Weight[kg]
1,7

Weight+ pack.[kg]
2

Logistical dimensions[mm]
(width x depth x height)
106x10x10

Packaging material
Decor 240g/m2

Details

An exceptional and impressive beach (and not only beach) advertising medium. The size of the four-panel wind screen is 4x0.75m. There is an option to order screens with more panels. The set includes one-side print on waterproof material, Decor 240g/m2, five wooden dowels and a practical transport bag with any overprint. You can order 1 piece only!

The images in the catalogue are for illustrative purposes only and the appearance of individual accessories may vary throughout the year, depending on availability.



From 39,00 EUR/pcs.



EVENT BARRIER COVER

EVENT OFFER

← [back to the content page](#)



The images in the catalogue are for illustrative purposes only and the appearance of individual accessories may vary throughout the year, depending on availability.



Information

Event Barrier Cover	Dimensions [cm]	Logistic dimensions [mm]	Weight [kg]	Weight+ pack.[kg]
Frontlight	250 x 160	15 x 15 x 163	1,80	2,05
	250 x 180	15 x 15 x 183	2,03	2,30
	250 x 200	15 x 15 x 203	2,25	2,55
	200 x 160	15 x 15 x 163	1,44	1,69
	200 x 180	15 x 15 x 183	1,62	1,89
Polyester 210g	250 x 160	15 x 15 x 163	0,84	1,09
	250 x 180	15 x 15 x 183	0,95	1,22
	250 x 200	15 x 15 x 203	1,05	1,35
	200 x 160	15 x 15 x 163	0,67	0,92
	200 x 180	15 x 15 x 183	0,76	1,03
Stretch Pro	250 x 160	15 x 15 x 163	1,04	1,29
	250 x 180	15 x 15 x 183	1,17	1,44
	250 x 200	15 x 15 x 203	1,30	1,60
	200 x 160	15 x 15 x 163	0,83	1,08
	200 x 180	15 x 15 x 183	0,94	1,21

Details

Barriers, which are popular and commonly used during outdoor events or concerts, have various names: protective barriers, concert barriers, sliding barriers, mobile barriers, event barriers, or police barriers. Our attractive advertising covers are designed specifically for such mobile protective barriers. When inside the attractive cover, the event barriers used for safety purposes can be used for advertising purposes as well. The relatively large available advertising surface and high traffic at events compose a recipe for an attractive advertising product. We offer three different types of covers, which means that we have something for everyone.



From 25,00 EUR/pcs.



ZEN ALUMINIUM FRAMES

High quality aluminium frames for advertising displays. We offer standalone two-side profiles, backlit or not, wall backlit or not and allowing for fixing two material layers and obtaining a 3D effect. Tell us what you need and we will prepare a perfect solution for you.

[← back to the content page](#)





BASIC

ZEN ALUMINIUM FRAMES

← [back to the content page](#)



Information

Maximum length [cm]
610

(It's possible to join the profiles into longer ones)

Profile weight [kg]
0,535kg/mb

Material

Anodized aluminium

Accessories

- single angular connectors (4 pcs per set)
- extension connectors (to join the profiles into longer ones)

Details

Wall frame made of a 2 cm thick aluminium profile. Used for displ ying textile printouts.

Ways to use:

- as a wall frame
- as a ceiling mounted frame

There is a special inlet in the outer edges of the Zen Frame, where a textile printout with a sewn around 14x3mm silicone keder should be placed. This makes the printout lay perfectly tight in the frame. Also, it allows to easily replace the printout without using any unnecessary tools.

Optional: frames also available in RAL colour palette.

The images in the catalogue are for illustrative purposes only and the appearance of individual accessories may vary throughout the year, depending on availability.



From 42,00 EUR/pcs.



BASIC BLACK

ZEN ALUMINIUM FRAMES

← [back to the content page](#)



Information

Maximum length [cm]
610

(It's possible to join the profiles into longer ones)

Profile weight [kg]
0,535kg/mb

Material

Anodized aluminium

Accessories

- single angular connectors (4 pcs per set)
- extension connectors (to join the profiles into longer ones)

Details

Wall frame made of a 2 cm thick aluminium profile. Used for displaying textile printouts.

Ways to use:

- as a wall frame
- as a ceiling mounted frame

There is a special inlet in the outer edges of the Zen Frame, where a textile printout with a sewn around 14x3mm silicone keder should be placed. This makes the printout lay perfectly tight in the frame. Also, it allows to easily replace the printout without using any unnecessary tools.

Optional: frames also available in RAL colour palette.

The images in the catalogue are for illustrative purposes only and the appearance of individual accessories may vary throughout the year, depending on availability.



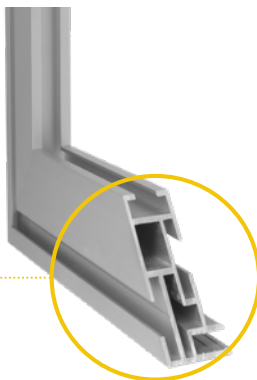
From 48,00 EUR/pcs.



SIMPLE

ZEN ALUMINIUM FRAMES

← [back to the content page](#)



Information

Maximum length [cm]
610

(It's possible to join the profiles into longer ones)

Profile weight [kg]
0,825kg/mb

Material

Anodized aluminium

Accessories

- angular double connectors (4 pcs per set)
- extension double connectors (to join the profiles into longer ones)
- stabilizing profiles (for frames longer than 2m)
- connectors for the stabilizing profiles

Details

Wall frame made of a 2,6 cm thick aluminium profile. Used for displaying textile printouts.

Ways to use:

- as a wall frame
- as a ceiling mounted frame

There is a special inlet in the outer edges of the Zen Frame, where a textile printout with a sewn around 14x3mm silicone keder should be placed. This makes the printout lay perfectly tight in the frame. Also, it allows to easily replace the printout without using any unnecessary tools.

Optional: frames also available in RAL colour palette.

The images in the catalogue are for illustrative purposes only and the appearance of individual accessories may vary throughout the year, depending on availability.



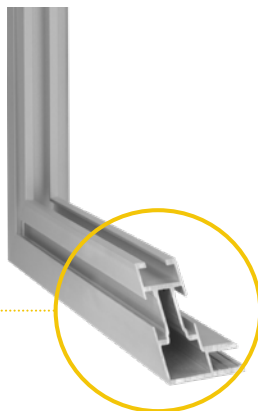
From 80,00 EUR/pcs.



SIMPLE BOLD

ZEN ALUMINIUM FRAMES

← [back to the content page](#)



The images in the catalogue are for illustrative purposes only and the appearance of individual accessories may vary throughout the year, depending on availability.



Information

Maximum length [cm]
580

(It's possible to join the profiles into longer ones)

Profile weight [kg]
0,529kg/mb

Material
Anodized aluminium

Accessories

- single angular connectors (4 pcs per set)
- extension connectors (to join the profiles into longer ones)

Details

Wall frame made of a 3,4 cm thick aluminium profile. Used for displaying textile printouts.

Ways to use:

- as a wall frame
- as a ceiling mounted frame

There is a special inlet in the outer edges of the Zen Frame, where a textile printout with a sewn around 14x3mm silicone keder should be placed. This makes the printout lay perfectly tight in the frame. Also, it allows to easily replace the printout without using any unnecessary tools.

Optional: frames also available in RAL colour palette.



From 56,00 EUR/pcs.



DOUBLE

ZEN ALUMINIUM FRAMES

← [back to the content page](#)



Information

Maximum length [cm]

610

(It's possible to join the profiles into longer ones)

Profile weight [kg]

1,038kg/mb

Material

Anodized aluminium

Accessories

- double angular connectors (4 pieces in set)
- double connectors for combining into longer profiles
- stabilising profiles (for frames larger than 2 m)
- connectors for stabilising profiles
- feet or hanging elements

Details

Wall frame made of a 4,9 cm thick aluminium profile. Used for displaying textile printouts.

Ways to use:

- partitions, room dividers, sound-absorbent panels
- double-sided hanging displays

The frame has a groove along the outer edge, where the 14x3mm silicone keel is inserted. This solution ensures perfect fitting of the textile print and allows to replace the prints without using any tools.

Optional: frames also available in RAL colour palette.

The images in the catalogue are for illustrative purposes only and the appearance of individual accessories may vary throughout the year, depending on availability.



From 179,00 EUR/pcs.



BACKLIGHT 100

ZEN ALUMINIUM FRAMES

← [back to the content page](#)



Information

Maximum length [cm]

610

(It's possible to join the profiles into longer ones)

Profile weight [kg]

1,550kg/mb

Material

Anodized aluminium

Accessories

- double angular connectors
- angular connectors ALU
- double connectors to extend steel
- stabilising profile (for frames over 2m long)
- connectors for profiles stabilising
- LED strip
- power supply
- plate to attach LED strip

Details

Highlighted wall frame made of aluminum profile 10 cm deep. Used for textile material print exposition.

Use option:

- as highlighted wall frames

ZEN frames have a groove on the outer edge. The fabric with the graphic is stitched with a 14x3mm silicon tape around, which is pressed into a slot. This makes the print perfectly strung onto the frame. The system allows fast print exchange without any tools.

Optional: frames also available in RAL colour palette.

The images in the catalogue are for illustrative purposes only and the appearance of individual accessories may vary throughout the year, depending on availability.



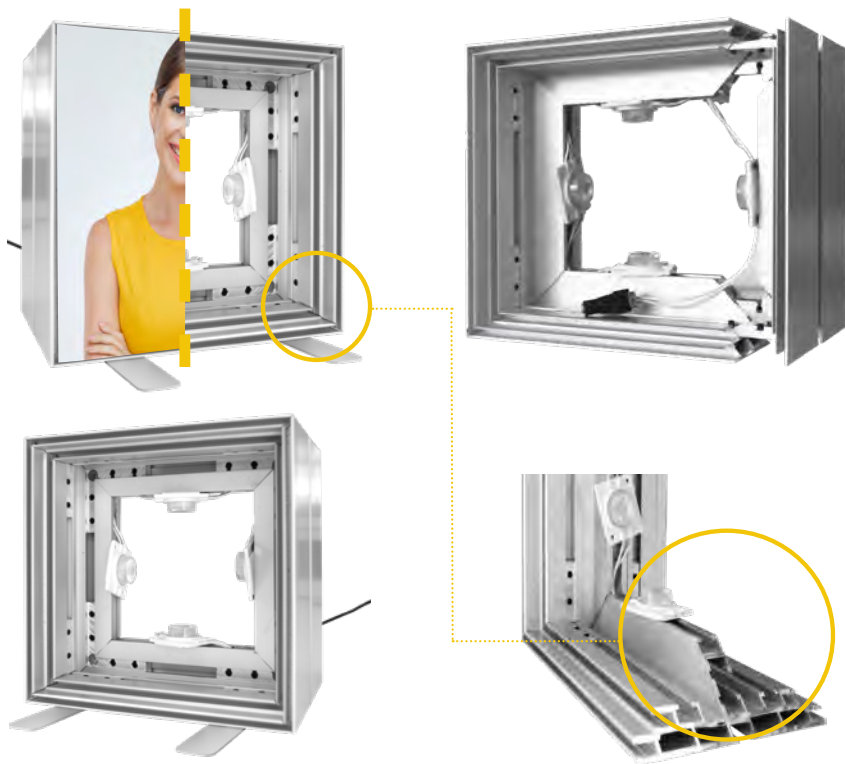
From **21,00 EUR/pcs.**



BACKLIGHT DOUBLE

ZEN ALUMINIUM FRAMES

← [back to the content page](#)



The images in the catalogue are for illustrative purposes only and the appearance of individual accessories may vary throughout the year, depending on availability.



Information

Maximum length [cm]
610

(It's possible to join the profiles into longer ones)

Profile weight [kg]
2,573kg/mb

Material

Anodized aluminium

Accessories

- double angular connectors (4 pieces in set)
- aluminium angular connectors (4 pieces in set)
- double connectors for combining into longer profile
- stabilising profiles (for frames larger than 2 m)
 - connectors for stabilising profile
 - LED strips
 - power supply
- PVC plate for mounting the LED system
- feet or hanging elements

Details

Backlight free-standing or hanging frame made of a 15 cm aluminium profile, used for mounting textile prints on both sides of the frame. This frame allows mounting two layers of printed material on each side of the frame to obtain a 3D-graphics effect.

Ways to use:

- partitions, room dividers, sound-absorbent panels
- double-sided hanging displays

The frame has a groove along the outer edge, where the 14x3mm silicone gasket is inserted. This solution ensures perfect fitting of the textile print and allows to replace the prints without using any tools.



From 533,00 EUR/pcs.



CARDBOARD STANDS

Cardboard stands are a perfect solution for promoting a product in an original way. Shelf stands, counter distributors, figure stands and many more are created by our POS department which provides solutions even for the most demanding customers. The cardboard used to manufacture our POS materials meets the highest standards, allows for producing stands which withstand high loads.

[← back to the content page](#)





shelf stand



ellipse



figure stand



digital print



durable shelves



type of cardboard



without die cost



production



totem



cube



bin



counter

DOWNLOAD OUR NEW POS CATALOGUE

Cardboard stands are a perfect solution for promoting a product in an original way. Shelf stands, counter distributors, figure stands and many more are created by our POS department which provides solutions even for the most demanding customers. The cardboard used to manufacture our POS materials meets the highest standards, allows for producing stands which withstand high loads.



PACKAGING FOR E-COMMERCE

Together with the constantly developing e-commerce sector, the demand for solutions dedicated for Internet providers is increasing all the time. We know how important comfort is, as well as safety and time required to deliver products to your recipients. Every day, every hour matters, because the customer waits for the courier. In order to address your expectations, we created a line of exceptional, extremely functional cardboard packaging. They will facilitate the shipping process, and will let your recipients enjoy their products as fast as possible. Instant packaging, fast folding cardboards, rollboxes, cardboard envelopes. Check the offer and choose a solution for yourself.

[← back to the content page](#)





INSTANT PACKAGING

Exceptionally comfortable and easy to fold, universal cardboard packaging. Thanks to a simple construction, you can fold it in 3 seconds, seal with a tape included and that's it.

You will surely appreciate:

- space saving thanks to flat storage
- folding in 3 seconds
- 5 different sizes and volumes adjusted to easypack machines
- possibility to personalize packaging
- easy sealing, remove the tape and press
- no possibility of unauthorized opening without leaving a trace



E-COMMERCE CONTACT

A consultant is at your disposal. Call and let him dispel your doubts.

phone: +48 500 785 446

email: opakowania@laboprint.eu

An extra option – Return cardboard – a unique system of glued tapes, thanks to which parcel preparations to replace or return a product have never been so easy! It's enough to unstick the other tape and that's it!



FAST FOLDING CARDBOARDS

Universal and capacious cardboard packaging which you will fold for shipping in 3 moves. Thanks to flat storage, you will save a lot of space. Proper cardboard and various sizes will allow for selecting appropriate packaging for your product.

You will surely appreciate:

- space saving thanks to flat storage
- exceptionally fast folding
- different sizes and volumes adjusted to easypack machines
- possibility to personalize packaging
- easy sealing, remove the tape and press
- no possibility of unauthorized opening without leaving a trace



An extra option – Return cardboard – a unique system of glued tapes, thanks to which parcel preparations to replace or return a product have never been so easy! It's enough to unstick the other tape and that's it!

E-COMMERCE CONTACT

A consultant is at your disposal. Call and let him dispel your doubts.

phone: +48 500 785 446

email: opakowania@laboprint.eu



ROLLBOXES

Universal and capacious cardboard packaging which you will fold extremely quickly. Thanks to flat storage, you will save a lot of space. Proper cardboard and various sizes will allow for selecting appropriate packaging for your product.

You will surely appreciate:

- space saving thanks to flat storage
- exceptionally fast folding
- different sizes and volumes adjusted to easypack machines
- possibility to personalize packaging
- easy sealing, remove the tape and press



E-COMMERCE CONTACT

A consultant is at your disposal. Call and let him dispel your doubts.

phone: +48 500 785 446

email: opakowania@laboprint.eu



CARDBOARD ENVELOPES

You're sending documents, catalogues or small and flat objects? A cardboard envelope is a perfect solution for you. The simplest, the most popular and verified method of shipment.

You will surely appreciate:

- saving space thanks to flat storage
- possibility to personalize the envelope
- 3 different sizes and volumes adjusted to easypack machines
- easy sealing, remove the tape and press
- no possibility of unauthorized opening without leaving a trace



E-COMMERCE CONTACT

A consultant is at your disposal. Call and let him dispel your doubts.

phone: +48 500 785 446

email: opakowania@laboprint.eu



DIGITALLY PRINTED LABELS

Every product being sold needs a label. The point is it should be an eye-catcher and should not leave the recipient indifferent. Here we also prove useful. Thanks to modern technologies which we use in digital label production, we are able to fulfill even your craziest ideas. Thanks to laser cutting to the shape, lamination, gliding or silver plating your labels will never be boring. And all this with no fees for the template and starting from 500 pcs!

[← back to the content page](#)





1




DETERMINE THE PRODUCT AND MATERIAL

2



GIVE THE NUMBER
STARTING FROM 500 PIECES

3



SELECT A SHAPE
NO FEES FOR A BLANKING DIE



www.labelexpress.eu

LABELS CONTACT

A consultant is at your disposal.
Call and let him dispel your doubts.
phone: **+48 500 188 185**
e-mail: **info@labelexpress.eu**

LABEL PRINTING IN DIGITAL TECHNOLOGY

Labo Print S.A. - the owner of Label Express brand - is a professional printing house of self-adhesive labels. We have been on the market for many years, offering our customers highest quality solutions. We guarantee that our self-adhesive labels are highest quality products, in an attractive price.



Wide variety of materials



Starting from 500 pieces!



Min/max. label size



Laser cutting to the shape - no fees for blankind dies



Short periods of execution



Cold stamping (silver/gold)



Matt gloss varnish 100%



Selective varnish



Laminate



WHAT LABELS DO WE PRINT?

As a professional printing house of self-adhesive labels, we guarantee our customers the highest quality of manufactured products. The labels from our offer can be freely personalized - we print labels of different shapes, on many types of materials and starting from 500 pcs!

LABELS CONTACT

A consultant is at your disposal.
Call and let him dispel your doubts.
phone: **+48 500 188 185**
e-mail: info@labelexpress.eu



ILLUMINATED AD

Perfectly draws customer's attention. We offer a variety of types of illuminated advertising, depending on your needs. It can be used outdoors or indoors. We offer a variety of shapes and sizes to create a backlit ad. We use energy-efficient LED lighting.

← [back to the content page](#)





SPATIAL LETTERS

Spatial letters are a perfect medium allowing to stand out from the competition. Thanks to the colour of the light used in LED modules, similar to daylight, our light letters always attract attention. It is possible to use modules of different colours, which allows to modify the message. We only use top class materials to manufacture the light letters. Thanks to the films which are through dyed or printed in UV technology, we are sure that all our works reflect the project sent by the customer.



aluminium frame + dibond



dibond



dibond box



aluminium frame



MOUNTING TYPE

To fit the space perfectly, we offer a few methods of fixing and side finishing. Every one of them is to optimize the project and prepare letters so that they would create a coherent whole with the surroundings. The process line of light letter department allows to prepare both hanging lightboxes and single elements, logos or standalone letters. The assembly methods suggested allow for manufacturing both small elements fixed on walls and large structures mounted on building roofs.



directly to the wall



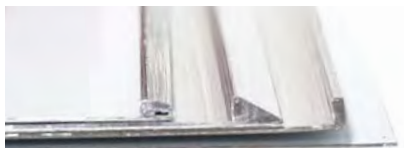


LETTER SIDE

The finishing of spatial letters we offer allows for a wide variety of uses. The production line allows to create letters both from ready-made tapes in standard colours and in all colours of RAL colour chart. Raw materials used to manufacture letters allow to develop projects of any height with elements 40, 60, 80, 100, 120 mm deep.



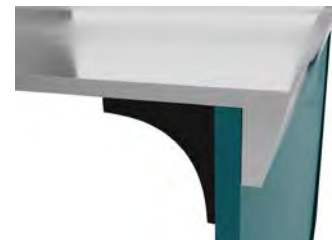
aluminium tapes - detail



flat side



sharp side



curled side



faced side



FINISH

Four types of letter side finishes allow to adjust ready-made forms to surrounding conditions. You will find more information on our webpage.



LIGHT BOXES



Placed flat on the surface of the wall, illuminated, of various shapes and sizes, allow you to noticeably distinguish your company from the competition. Most often ordered as signs above the entrance of shops or service points such as hairdressing and beauty salons, or as an image advertisement. They are also perfect for marking public institutions.





NEON FLEX

Traditional illuminated advertising in a modern way. Glass neon signs have become a thing of the past, giving way to new ones made of flexible plastic. They make it possible to use different colours and shapes in one. Thanks to the use of LED technology, flex neon signs are more efficient and resistant to damage, while shining with an even, colourful light. The forms we propose are a modern approach to the traditional and long-cherished neon sign.





LARGE FORMAT

Large format advertisement has been known all over the world for decades. Starting from banners or large area meshes, through various window, car or floor films, plateboards prints, to untypical forms of spatial advertisement, expanding the portfolio of products and services offered all the time. Tell us what you need, we will find a suitable solution.

← [back to the content page](#)





ADVERTISING BANNERS

LARGE FORMAT

← [back to the content page](#)



Information

Advertising banners are probably the most popular form of external advertising. Cheap, resistant to external conditions, easy to install, and also impressive when designed in a proper way. We have been making banners of all sizes for over ten years. Also we would love to make some for you.

Proposed material*	Thickness	Certificates
Airmesh (PES)	235g/m2	B1
Airtex Grayback	330g/m2	B1
Backlight	500g/m2	B1
Backlight 4+4	500g/m2	B1
Blockout 4+0	440g/m2	B1
Blockout 4+4	440g/m2	B1
Blockout 4+0	650g/m2	B1
Blockout 4+4	650g/m2	B1
Frontlight	370-500g/m2	B1
Frontlight ECO 200	200g/m2	B1
Frontlight ECO 320	320g/m2	B1
Mesh	270g/m2	B1
Mesh M1	330g/m2	B1/M1

*Other materials available in the price list.

The images in the catalogue are for illustrative purposes only and the appearance of individual accessories may vary throughout the year, depending on availability.



From 6,90 EUR/m²



TEXTILES MATERIALS

LARGE FORMAT

← [back to the content page](#)



Information

Basic:
cut to size

Standard:
rope and toggle, pocket, eyelets, stitching

Special:
plastic hooks, velcro, silicon strip 14 mm
Non-standard finishing on request. Minimum flag size 50x50c

Textiles allows you to express your creativity and are quite light weight materials comparing to other medias. Flags, curved pop-ups, LED advertising walls and gazebos, those are our top products that can be customised.

Proposed material*	Thickness	Certificates
Blackback pro*	250g/m2	B1
Satin	140g/m2	B1
Tent	280g/m2	B1
Textile backlight	270g/m2	B1/M1
Polyester 115	115g/m2	B1
Polyester 210	210g/m2	B1/M1
Decor	240g/m2	
Mesh fla	115g/m2	
Stretch pro	260g/m2	
Samba UV	195g/m2	

The images in the catalogue are for illustrative purposes only and the appearance of individual accessories may vary throughout the year, depending on availability.

*Other materials available in the price list.



From 5,90 EUR/m²



STIFF MATERIALS

LARGE FORMAT

← [back to the content page](#)



The images in the catalogue are for illustrative purposes only and the appearance of individual accessories may vary throughout the year, depending on availability.



Information

Material

Polypropylene 3mm- 3x2 m

Thickness

3 mm

Details

Large format advertisement is not only web fed printing. Present technologies allow to print directly on flat materials. In advertisement, direct printing on plexiglass, PVC, cardboard and dibond is more and more popular. It significantly facilitates creating original products in the range of POS, gadgets or external ads and signboards. Check what we can do for you.



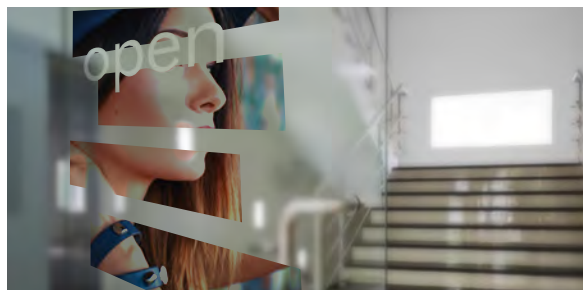
From 3,78 EUR/pcs.



ADVERTISING FILMS

LARGE FORMAT

← [back to the content page](#)



The images in the catalogue are for illustrative purposes only and the appearance of individual accessories may vary throughout the year, depending on availability.



Information

Material
monomeric fil

Thickness
80μ

Width
1,60m

Details

The offer of films for various displays is so wide that there is no possibility to mention all of them. Dedicated to external and internal displays, for sticking on vehicles, bank or shopchain displays, easily removed, non-glue, non-transparent, OWV, frosted, floor or plotter films... we could keep listing them forever. No matter which one you will choose, you can order it with any overprint. Free advice!



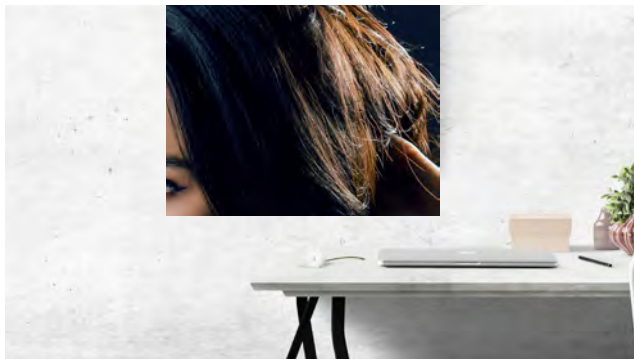
From 5,02 EUR/pcs.



PAPERS

LARGE FORMAT

← [back to the content page](#)



The images in the catalogue are for illustrative purposes only and the appearance of individual accessories may vary throughout the year, depending on availability.



Information

Material

Blue back side

Thickness

120g/m²

Width

max. 1,27m

Details

Paper is the most common product for printing, if used properly it can be a unique carrier of your project. Different types of papers allow you to create original creations from posters, advertisements and wallpapers with individual designs. Define your needs in an interview with our consultant, choose the right medium for your project.



From 4,25 EUR/pcs.



ADDITIONAL SERVICES

If you are not sure if your files are prepared according to the specifications, Labo Print S.A. will gladly help you. In the table below we present examples of what we can do for you.

A WHAT WE OFFER IN THE PRICE IF YOU COMMISSION US TO MAKE A PRINT

A1	Proportional adjustment of file dimensions
A2	Disproportionate adjustment of file dimensions (up to 2% of the dimension - automatic)
A3	Adjust dimensions by adding a white background
A4	Adjustment of dimensions before adding graphics in the background color or other than white (applies to applique)
A5	Dividing into bitches according to the scheme or customer's needs
A6	Preparation of a simple template (square, circle)
A7	Preparing the punch to drill holes (standard diameter 5mm / 2cm from the edge)
A8	Adding gradients from a mirror image (square or rectangle)
A9	color matching over 30m2
A10	Determination of eyelets locations according to the customer's scheme

In the case of correcting the above elements in multiple files, the work of the graphic designer will also be counted

B WHAT WE CAN DO IN ADDITION

Price EUR

B1	Simplify an overly complex die-cut	From 10
B2	Remove unwanted/unneeded frames from the file that delineate the dimension of the work (in the middle of the file)	10
B3	Add bleed to file, for products cut to shape	20
B4	Prepare a layer with a die-cut or for printing with white ink (vector file)	10
B5	Prepare a layer with a die-cut or for printing with white ink (raster file)	20
B6	Place a layer for white ink printing in the production file (supplied as a separate file or on a separate page of a multi-page pdf)	10

Please note: that not every file can be interfered with and that in case of file interference, the delivery time can be extended.

All values quoted are net prices and must be increased by 23% Vat*.



B	WHAT WE CAN DO IN ADDITION	Price EUR
B7	Prepare the template for the customer's flag design	10
B8	Place the template in the production file (provided in a separate file or on a separate page of a multi-page pdf)	5
B9	Adjust the production file to the Printer's template	10
B10	Adjust graphics to safe areas	10
B11	Remove unwanted elements from the production file	10
B12	Prepare a simple project based on the provided materials and scheme	From 25
B13	Re-preparation for printing of a file substituted by the customer (after preparation, up to 10 items) Production	25
B14	Re-preparation for print of the file changed by the customer (after preparation) DTP	10
B15	color matching below 20m2	From 30
B16	Prepare a confectionery view	5
B17	Convert fonts to curves from the enclosed font along with the license to send a preview for customer approval	15
B18	Re-checking an incorrectly prepared file on the fourth and each subsequent check	15
B19	Preparing a file for an item that has been cancelled	10
B20	Adding a customer logo or other element on the weld seam of a file	5
B21	Enable / disable overprinting in production files	5
B22	Embedding of graphic elements in a file, interference with files with non-embedded elements	15
B23	Preparing template for complex shapes or small parts	From 30
B24	Preparing a layer for printing complex shapes with white ink	From 30
B25	Personalization	From 30
B26	Interference with files with very complex graphics / a lot of effects	From 30
B27	Disproportionate adjustment of file dimensions (more than 2% - arrangement) sending preview for customer approval	10
B28	Prepare a layer with a die-cut or for printing with white ink (raster file)	10

Please note: that not every file can be interfered with and that in case of file interference, the delivery time can be extended.

Wszystkie podane wartości są cenami netto i należy do nich doliczyć 23% podatku Vat*

C	WHAT WE CAN DO IN ADDITION	Price EUR
C1	3D Visualization (Customer Graphics)	7
C2	Design preparation - the constructor's work	35

Please note: that not every file can be interfered with and that in case of file interference, the delivery time can be extended.

All values quoted are net prices and must be increased by 23% Vat*.

HAVE A QUESTION? WE SPEAK YOUR LANGUAGE!

AUSTRIA

+48 504 237 723
+ 48 510 925 461
at@laboprint.eu

BELGIUM

+48 504 067 403 (FR)
+48 516 041 055 (NL)
be@laboprint.eu

DENMARK

+48 504 067 294
dk@laboprint.eu

FINLAND

+48 504 067 294
+48 504 067 389
fi@laboprint.e

FRANCE

+48 504 067 403
+ 48 516 041 030
fr@laboprint.eu

GERMANY

+48 504 237 723
+ 48 510 925 461
de@laboprint.eu

GREAT BRITAIN

+48 510 925 418
+48 572 698 260
en@laboprint.eu

IRELAND

+48 510 925 418
+48 572 698 260
irl@laboprint.eu

ITALY

+48 510 925 418
it@laboprint.eu

LUXEMBOURG

+48 517 250 373 (DE)
+48 504 067 403 (FR)
lu@laboprint.eu

NETHERLANDS

+48 516 041 055
nl@laboprint.eu

NORWAY

+48 504 067 294
no@laboprint.eu

POLAND

+48 510 925 460
+ 48 506 742 763
pl@laboprint.eu

SWEDEN

+48 504 067 389
+48 504 067 294
se@laboprint.eu

SWITZERLAND

+48 504 237 723 (DE)
+48 510 925 461 (DE)
ch@laboprint.eu