



 LaboPrint

# POS & PACKAGING

---





# POS CATALOGUE

---

# POS MENU

## POS CATALOGUE

SHELF STANDS

MODULAR STANDS

HOOK STANDS

COUNTERTOP DISPLAYS

BINS

FIGURE STANDEES

BOARD AND FLYER DISPLAYS

CUBES

ELLIPSES

ANIT-THEFT DETECTOR COVERS (EAS)

## PRICE LIST

POS

## CONTACT





# SHELF STANDS

**The design of our shelf stands is individually adapted to the products displayed on them, which increases their visibility, while directly affecting increased sales.**

Made of cardboard, they are lightweight and mobile, they can be easily moved from place to place. Durable - tested in terms of shelf load capacity and properly selected cardboard.

The possibility of full customisation makes it easy to add your own branding to the stand, while the optional space on the topper is a carrier of additional marketing information, which, combined with excellent quality, gives a multi-functional, practical display that replaces traditional racks and attracts the attention of customers.





# STAND TOPPER 1

LO1992



## Information

### External dimensions [mm]

(W x D x H)

415x285x1310

### Weight [kg]

1,5

### Logistic dimensions [mm]

(W x D x H)

1380x740x20

### Load per shelf [kg]

up to 3

### Details

- lightweight and very easy to assemble stand with 4 shelves, topper and plinth with additional marketing space.
- shelf dimensions [mm] (W x D x H) 398x230x270
- shelves coming out of the stand body, without additional accessories
- the possibility of printing the back of the stand from the inside (from the back they will be white)
- possibility of individual adjustment of the stand to the products
- material: B cardboard

### Additional accessories

- water protection tray
- transport cap
- individual packaging

Additional accessories are priced individually - ask your seller



Starting from 8,7 GBP/pcs.

The images in the catalogue are for illustrative purposes only and the appearance of individual accessories may vary throughout the year, depending on availability.



Durable shelves



Standard retail chain dimensions



Printing technology: UV



## STAND TOPPER 2

L02187



### Information

#### External dimensions [mm]

(W x D x H)

600x400x1265

#### Weight [kg]

6

#### Logistic dimensions [mm]

(W x D x H)

1400x660x80

#### Load per shelf [kg]

up to 15

#### Details

- durable stand with 4 shelves, topper and plinth with additional marketing space.
- the possibility of printing the back of the stand from the inside (from the back they will be white)
  - shelf dimensions [mm] (W x D x H) 562x345x255
- shelves mounted with vertical supports and additional screws, strengthening their load-bearing capacity
  - possibility of individual adjustment of the stand to the products
- material: EB cardboard

#### Additional accessories

- water protection tray
- water protection tray
- individual packaging

Additional accessories are priced individually - ask your seller



Starting from 26,4 GBP/pcs.

The images in the catalogue are for illustrative purposes only and the appearance of individual accessories may vary throughout the year, depending on availability.



Durable shelves



Standard retail chain dimensions



Printing technology: UV



## STAND TOPPER 3

L02484



### Information

#### External dimensions [mm]

(W x D x H)

600x400x1394

**Weight [kg]**

7

#### Logistic dimensions [mm]

(W x D x H)

1400x620x70

#### Load per shelf [kg]

up to 15

#### Details

- durable stand with 4 shelves, topper and plinth with additional marketing space.
- shelf dimensions [mm] (W x D x H) 572x349x240
- shelves mounted with vertical supports and additional screws, strengthening their load-bearing capacity
- possibility of individual adjustment of the stand to the products
- material: EB cardboard

#### Additional accessories

- water protection tray
- transport cap
- individual packaging

Additional accessories are priced individually - ask your seller



Starting from 28,91 GBP/pcs.

The images in the catalogue are for illustrative purposes only and the appearance of individual accessories may vary throughout the year, depending on availability.



Durable shelves



Standard retail chain dimensions



Printing technology: UV



## STAND TOPPER 4

L04956



### Information

#### External dimensions [mm]

(W x D x H)

610x410x1450

#### Weight [kg]

7

#### Logistic dimensions [mm]

(W x D x H)

1120x670x80

#### Load per shelf [kg]

up to 6

#### Details

- durable stand with 3 shelves, topper and plinth with additional marketing space
- shelf dimensions [mm] (W x D x H) 565x387x298
- shelves mounted without additional accessories
- possibility of individual adjustment of the stand to the products
- material: EB cardboard

#### Additional accessories

- water protection tray
- transport cap
- individual packaging

Additional accessories are priced individually - ask your seller



Starting from 25,48 GBP/pcs.

The images in the catalogue are for illustrative purposes only and the appearance of individual accessories may vary throughout the year, depending on availability.



Durable shelves



Standard retail chain dimensions



Printing technology: UV



# STAND TOPPER 5

LO2257



## Information

### External dimensions [mm]

(W x D x H)

600x420x1500

### Weight [kg]

6

### Logistic dimensions [mm]

(W x D x H)

1540x640x50

### Load per shelf [kg]

up to 6

### Details

- durable stand with 4 shelves and a top panel
- shelf dimensions [mm] (W x D x H) 563x386x258
- shelves mounted without additional accessories
- possibility of individual adjustment of the stand to the products
- material: EB cardboard

### Additional accessories

- water protection tray
- transport cap
- individual packaging

Additional accessories are priced individually - ask your seller



Starting from 22,7 GBP/pcs.

The images in the catalogue are for illustrative purposes only and the appearance of individual accessories may vary throughout the year, depending on availability.



Durable shelves



Standard retail chain dimensions



Printing technology: UV





# STAND CLASSIC 1

L04950



## Information

### External dimensions [mm]

(W x D x H)

600x400x1400

### Weight [kg]

8

### Logistic dimensions [mm]

(W x D x H)

1420x600x70

### Load per shelf [kg]

up to 15

### Details

- a durable stand with 4 shelves and plinth with additional marketing space, without topper
- shelf dimensions [mm] (W x D x H) 573x349x240
- shelves mounted with vertical supports and additional screws, strengthening their load-bearing capacity
- possibility of individual adjustment of the stand to the products
- material: EB cardboard

### Additional accessories

- water protection tray
- transport cap
- individual packaging

Additional accessories are priced individually - ask your seller



Starting from 31,9 GBP/pcs.

The images in the catalogue are for illustrative purposes only and the appearance of individual accessories may vary throughout the year, depending on availability.



Durable shelves



Standard retail chain dimensions



Printing technology: UV



## STAND CLASSIC 2

L04866



### Information

#### External dimensions [mm]

(W x D x H)

600x400x1500

#### Weight [kg]

7

#### Logistic dimensions [mm]

(W x D x H)

1520x600x70

#### Load per shelf [kg]

up to 15

#### Details

- a durable stand with 4 shelves and plinth with additional marketing space, without toppler
- shelf dimensions [mm] (W x D x H) 575x350x238
- shelves mounted with vertical supports and additional screws, strengthening their load-bearing capacity
- possibility of individual adjustment of the stand to the products
- material: EB cardboard

#### Additional accessories

- water protection tray
- transport cap
- individual packaging

Additional accessories are priced individually - ask your seller



Starting from 28,54 GBP/pcs.

The images in the catalogue are for illustrative purposes only and the appearance of individual accessories may vary throughout the year, depending on availability.



Durable shelves



Standard retail chain dimensions



Printing technology: UV



# MODULAR STANDS

---

**Modular stands provide convenience of use and logistical simplifications.**

They are durable and aesthetic while enabling very easy re-stocking or replacement of products, because each module is made separately. They can be freely switched or removed without having to move the entire stand.

It is also possible to apply different brands to individual modules



# MODULAR STAND

L02022



## Information

**External dimensions [mm]**

**(W x D x H)**

300x400x1660

**Weight [kg]**

3

**Logistic dimensions [mm]**

**(W x D x H)**

1212x961x20

**Load per shelf [kg]**

up to 10

## Details

- topper and plinth as additional marketing space
- 5 separate modules for any configuration - 1/8 pallet
- possibility of individual adjustment of the stand and number of modules to the products
- the possibility of printing each module with a different image
- material: B cardboard

## Additional accessories

- water protection tray
- transport cap
- individual packaging

**Additional accessories are priced individually - ask your seller**



**Starting from 21,78 GBP/pcs.**

The images in the catalogue are for illustrative purposes only and the appearance of individual accessories may vary throughout the year, depending on availability.



**Simplifies logistics**



**Re-stocking of rotating products**



**Printing technology: UV**

# MODULAR STAND



## Information

### External dimensions [mm]

(W x D x H)

600x400x1500

### Weight [kg]

4

### Logistic dimensions [mm]

(W x D x H)

1540x1044x28

### Load per shelf [kg]

up to 15

### Details

- topper and plinth as additional marketing space
- 5 separate modules for any configuration
- 1/8 pallet
- possibility of individual adjustment of the stand and number of modules to the products
- the possibility of printing each module with a different image
- material: EB cardboard

### Additional accessories

- water protection tray
- transport cap
- individual packaging

Additional accessories are priced individually - ask your seller



Starting from 40,27 GBP/pcs.

The images in the catalogue are for illustrative purposes only and the appearance of individual accessories may vary throughout the year, depending on availability.



Simplifies logistics



Re-stocking of rotating products



Printing technology: UV

# HOOK STANDS

**Hook stands allow for interesting display of small items packed in individual packages or products that require to be suspended on hooks.**

The hook stands in our offer are characterised by durability and aesthetic design. Their advantage is the possibility of free arrangement of hooks on the entire inner wall of the stand. This allows 100% of the displayed surface to be used so that the products are close to each other, without creating empty spaces. It is also possible to customise the quantity and load of the hooks for specific products.



# HOOK STAND

L04959



 **Starting from 24,16 GBP/pcs.**

The images in the catalogue are for illustrative purposes only and the appearance of individual accessories may vary throughout the year, depending on availability.



**Easy to place**



**Simplifies the display of non-typical products**



**Printing technology: UV**



**Information**

**External dimensions [mm]  
(W x D x H)**

600x400x1600

**Weight [kg]**

5

**Logistic dimensions [mm]  
(W x D x H)**

701x1600x30

**Load per stand [kg]**

up to 15

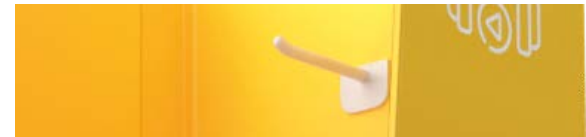
## Details

- durable stand made of EB cardboard
- the possibility of individual adjustment of the quantity, placement and load of hooks to the products (the presented model has 9 pieces)
- topper and plinth as additional marketing space

## Additional accessories

- water protection tray
- transport cap
- individual packaging

**Additional accessories are priced individually - ask your seller**





# COUNTERTOP DISPLAYS

---

**Products that customers spontaneously reach for require an element that will attract attention at the moment of making final purchasing decisions.**

Countertop displays are practical and versatile cardboard carriers with small dimensions, enabling products to be displayed in the cash register area or on the display counter. They have two tasks - they contribute to sales and image. Often, it is a unique and creative display design that attracts the customer's attention at the last moment and he/she decides on a spontaneous purchase. The perfect solution for small-scale products from the food, pharmaceutical, cosmetic, zoological and even jewellery industries.



# COUNTERTOP DISPLAY

L04966



## Information

### External dimensions [mm]

(W x D x H)

157x155x225

### Weight [kg]

0,2

### Logistic dimensions [mm]

(W x D x H)

582x685x1,5

### Details

- countertop display perfect for the cash register area, made of E cardboard
- easy assembly in the place of display
- possibility of individual adjustment to the product

### Additional accessories

- modification of the topper as a display closure for transport
- individual packaging

Additional accessories are priced individually - ask your seller



Starting from 1,17 GBP/pcs.

The images in the catalogue are for illustrative purposes only and the appearance of individual accessories may vary throughout the year, depending on availability.



Perfect for spontaneous selection products



Easily integrated with the shop space



Printing technology: UV

# BINS

**Bins make it possible to display small products such as cosmetics, sweets and toys in an unusual way.**

Their great advantage is access from all sides as well as ease of setting them up in the communication routes. Customers can shop "all around"!





# BIN

L04970



## Information

### External dimensions [mm]

(W x D x H)

324x218x698

### Weight [kg]

0,75

### Logistic dimensions [mm]

(W x D x H)

984x495x5

### Fill depth [mm]

270

### Details

- durable and aesthetic free-standing display made of cardboard E Flute
- perfect for promotional products with the possibility to place anywhere and with access from all sides
- attractive design increases the visibility of products and directly affects sales

### Additional accessories

- individual packaging

Additional accessories are priced individually - ask your seller



Starting from 4,38 GBP/pcs.

The images in the catalogue are for illustrative purposes only and the appearance of individual accessories may vary throughout the year, depending on availability.



Access from all sides



Easy assembly



Printing technology: UV

# BIN

LO0559



## Information

### External dimensions [mm]

(W x D x H)  
472x540x777

**Weight [kg]**  
2,5

### Logistic dimensions [mm]

(W x D x H)  
873x780x30

**Fill depth [mm]**  
210

### Details

- durable display basket made of B and EB cardboard
- quick and easy assembly
- perfect for displaying heavier promotional products

### Additional accessories

- individual packaging

**Additional accessories are priced individually - ask your seller**



**Starting from 16,08 GBP/pcs.**

The images in the catalogue are for illustrative purposes only and the appearance of individual accessories may vary throughout the year, depending on availability.



**Access from all sides**



**Easy assembly**



**Printing technology: UV**

# BIN

L06586



## Information

### External dimensions [mm]

(W x D x H)

600x520x808

### Weight [kg]

4,7

### Logistic dimensions [mm]

(W x D x H)

1165x943x25

### Fill depth [mm]

front: 200 / back: 300

### Details

- oblique display basket made of EB cardboard
- custom basket top increases the visibility of products directly affecting sales

### Additional accessories

- individual packaging

Additional accessories are priced individually - ask your seller



Starting from 12,60 GBP/pcs.

The images in the catalogue are for illustrative purposes only and the appearance of individual accessories may vary throughout the year, depending on availability.



Access from all sides



Easy assembly

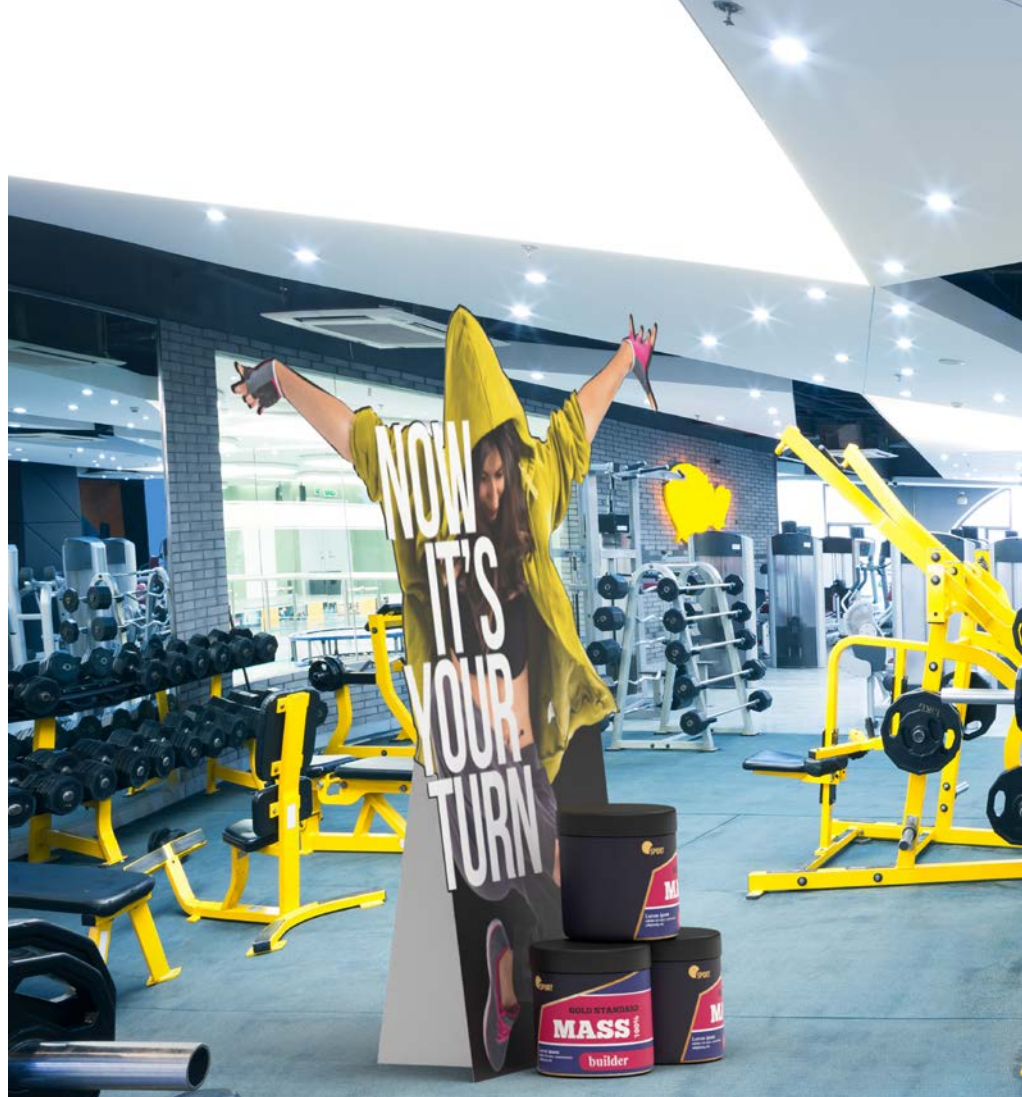


Printing technology: UV

# FIGURE STANDEES

Figure standees made of cardboard are perfect for Christmas exhibitions, trade fairs and social events.

The possibilities offered by realistic print and cut-out are a solution for unusual marketing campaigns.



## FIGURE BIG

LO4974



### Information

### External dimensions [mm]

(W x D x H)

1470x1980

**Weight [kg]**

4,8

### Logistic dimensions [mm]

(W x D x H)

1490x990x15

### Details

- a large character or product standee in any shape prepared on the basis of an individual outline - the visualisation shows a sample standee
  - made of EB cardboard
- stable support at the back, the size of which is individually adjusted to the size of the standee
- perfectly attracts attention
- for transport: the possibility of dividing the standee in half

### Additional accessories

- individual packaging
- pocket for flyers

**Additional accessories are priced individually - ask your seller**



**Starting from 17,17 GBP/pcs.**

The images in the catalogue are for illustrative purposes only and the appearance of individual accessories may vary throughout the year, depending on availability.



**Attracts customers' attention**



**Perfect for Christmas, sports competitions**



**Printing technology: UV**

## FIGURE SMALL

L04976



### Information

### External dimensions [mm]

(W x D x H)

965x1500

### Weight [kg]

2,4

### Logistic dimensions [mm]

(W x D x H)

1500x965x10

### Details

- a small character or product standee in any shape prepared on the basis of an individual outline - the visualisation shows a sample standee
  - made of EB cardboard
- stable support at the back, the size of which is individually adjusted to the size of the standee
- perfectly attracts attention
- for transport: the possibility of dividing the standee in half

### Additional accessories

- individual packaging
- pocket for flyers

**Additional accessories are priced individually - ask your seller**



**Starting from 11,15 GBP/pcs.**

The images in the catalogue are for illustrative purposes only and the appearance of individual accessories may vary throughout the year, depending on availability.



**Attracts customers' attention**



**Perfect for Christmas, sports competitions**



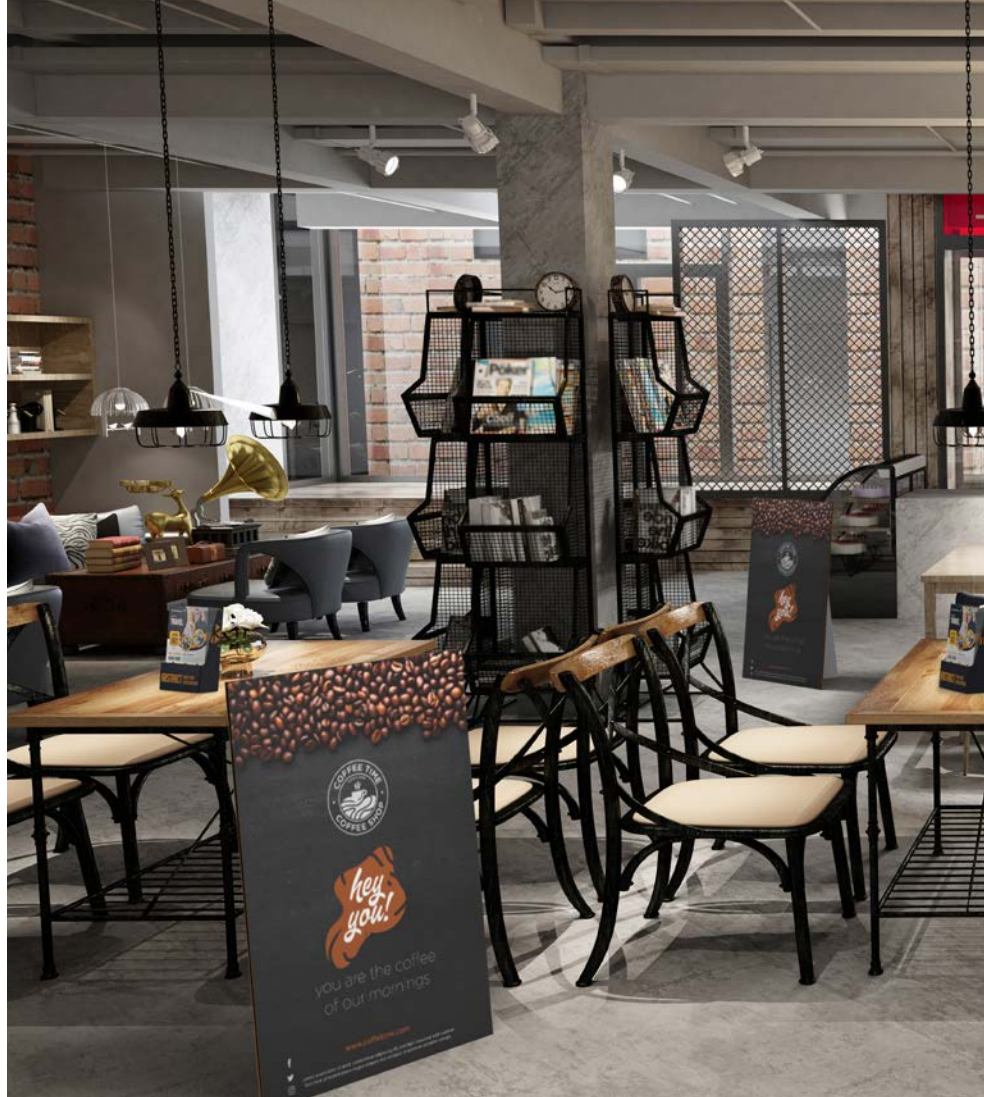
**Printing technology: UV**



# BOARD AND FLYER DISPLAYS

**Displays are an important point in marketing communication.**

Flyers are a good complement to knowledge about products or marketing and social campaigns. Where it is important to provide comprehensive information in an effective way, there is room for A-boards/flyer displays.



# BOARD DISPLAY A5

L04977



## Information

### External dimensions [mm]

(W x D x H)

149x210

### Weight [kg]

0,05

### Logistic dimensions [mm]

(W x D x H)

210x149x4

### Details

- promotional board display in A5 format made of E cardboard
- easy and quick assembly
- a lot of space for marketing communication
- stable support at the back

### Additional accessories

- individual packaging

Additional accessories are priced individually - ask your seller



Starting from 0,56 GBP/pcs.

The images in the catalogue are for illustrative purposes only and the appearance of individual accessories may vary throughout the year, depending on availability.



Easy to arrange in space



Countertop model



Printing technology: UV



# BOARD DISPLAY A4

L04978



## Information

External dimensions [mm]

(W x D x H)

210x297

Weight [kg]

0,1

Logistic dimensions [mm]

(W x D x H)

297x210x4

## Details

- promotional board display in A4 format made of E cardboard
- easy and quick assembly
- a lot of space for marketing communication
- stable support at the back

## Additional accessories

- individual packaging

Additional accessories are priced individually - ask your seller



Starting from 0,8 GBP/pcs.

The images in the catalogue are for illustrative purposes only and the appearance of individual accessories may vary throughout the year, depending on availability.



Easy to arrange in space



Countertop model



Printing technology: UV

# BOARD DISPLAY B1

L04979



## Information

External dimensions [mm]

(W x D x H)

707x1000

Weight [kg]

1,2

Logistic dimensions [mm]

(W x D x H)

1000x707x10

### Details

- promotional board display in B1 format made of EB cardboard
- easy and quick assembly
- a lot of space for marketing communication
- stable support at the back

### Additional accessories

- individual packaging

Additional accessories are priced individually - ask your seller



Starting from 5,01 GBP/pcs.

The images in the catalogue are for illustrative purposes only and the appearance of individual accessories may vary throughout the year, depending on availability.



Easy to arrange in space



Free-standing model



Printing technology: UV

# FLYER DISPLAY

L01291



## Information

### External dimensions [mm]

(W x D x H)

213x80x300

### Weight [kg]

0,16

### Logistic dimensions [mm]

(W x D x H)

296x385x5

### Details

- flyer and folder dispenser in A4 format made of E cardboard
- easy and quick assembly
- excellent in the cash register area

### Additional accessories

- individual packaging

Additional accessories are priced individually - ask your seller



Starting from 0,16 GBP/pcs.

The images in the catalogue are for illustrative purposes only and the appearance of individual accessories may vary throughout the year, depending on availability.



Easy to arrange in space



Countertop model



Printing technology: UV

# CUBES

**A marketing message is often as important as product display.**

Well-provided product information allows customers to make purchasing decisions faster and more accurately. Our proposals for image products such as ellipses or cubes provide a spectrum of opportunities in building marketing communication.



# CUBE

L04745



glued, shipped flat



## Information

Internal dimensions [mm]  
(W x D x H)

300x300x300

Weight [kg]

0,6

Logistic dimensions [mm]  
(W x D x H)

990x603x4

## Details

- display cube perfect as an advertising gadget at trade fairs or a decoration for shop window displays, made of E cardboard
- the possibility of printing each wall with a different image
  - very easy to fold
  - glued, shipped flat
- available in various formats

## Additional accessories

- individual packaging

Additional accessories are priced individually - ask your seller



Starting from 3,54 GBP/pcs.

The images in the catalogue are for illustrative purposes only and the appearance of individual accessories may vary throughout the year, depending on availability.



Easy assembly



Possibility of placing next to each other



6 walls with 100% print



Printing technology: UV

# CUBE

LO4750



connected with fasteners, shipped flat



Starting from 5,77 GBP/pcs.

The images in the catalogue are for illustrative purposes only and the appearance of individual accessories may vary throughout the year, depending on availability.



## Information

Internal dimensions [mm]  
(W x D x H)

500x500x500

Weight [kg]  
1,2

Logistic dimensions [mm]  
(W x D x H)

580x580x10

## Details

- display cube perfect as an advertising gadget at trade fairs or a decoration for shop window displays, made of E cardboard
- the possibility of printing each wall with a different image
  - very easy to fold
- connected with fasteners, shipped flat
- available in various formats

## Additional accessories

- individual packaging

Additional accessories are priced individually - ask your seller



Easy assembly



Possibility of  
placing next to  
each other



6 walls with 100%  
print



Printing  
technology: UV

# ELLIPSES

**Ellipses are a very popular way of advertising. They are very light and easy to transport.**

Quick assembly makes it possible to create a display in just seconds – it does not require tools and specific manual skills.





# ELLIPSE

L04432



## Information



**External dimensions [mm]**

**(W x D x H)**

500x1900

**Weight [kg]**

1

**Logistic dimensions [mm]**

**(W x D x H)**

947x500x6

## Details

- very popular free-standing elliptical stands made of solid white/grey cardboard
- thanks to their very simple design, they are easy to assemble in the place of display, stabilised by two internal inserts
- very large marketing area with the possibility of placing various images on the front and back
  - divided in half for transport purposes
  - available in various formats - check price list

## Additional accessories

- individual packaging
- pocket for flyers

**Additional accessories are priced individually - ask your seller**



**Starting from 9,6 GBP/pcs.**

The images in the catalogue are for illustrative purposes only and the appearance of individual accessories may vary throughout the year, depending on availability.



**Quick assembly**



**Easy transport**



**Printing technology: UV**

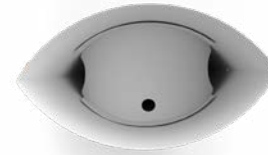


# ELLIPSE

L04434



## Information



**External dimensions [mm]**

**(W x D x H)**

600x1900

**Weight [kg]**

1,2

**Logistic dimensions [mm]**

**(W x D x H)**

947x600x6

## Details

- very popular free-standing elliptical stands made of solid white/grey cardboard
- thanks to their very simple design, they are easy to assemble in the place of display, stabilised by two internal inserts
- very large marketing area with the possibility of placing various images on the front and back
  - divided in half for transport purposes
- available in various formats - check price list

## Additional accessories

- individual packaging
- pocket for flyers

**Additional accessories are priced individually - ask your seller**



**Starting from 10,4 GBP/pcs.**

The images in the catalogue are for illustrative purposes only and the appearance of individual accessories may vary throughout the year, depending on availability.



**Quick assembly**



**Easy transport**



**Printing technology: UV**

# ANIT-THEFT DETECTOR COVERS

**Rectangular or elliptical cardboard stands are also perfect as covers for electronic article surveillance systems.**

Lightweight with 3-second assembly, they make it possible to place marketing communication on both sides of the EAS system related to, for example, promotion or sale visible immediately at the shop entrance.



# EAS COVER

L04432



## Information

### External dimensions [mm]

(W x D x H)

570x1600

### Weight [kg]

0,7

### Logistic dimensions [mm]

(W x D x H)

800x570x6

### Details

- ellipse-shaped cover for ANIT-THEFT DETECTOR systems made of solid white/white cardboard
- easy and quick assembly
- very large area for marketing communication
- possibility of placing various images on the front and back
- divided in half for transport purposes
- various formats are available, adapted to the size of the EAS systems - check price list

### Additional accessories

- individual packaging

Additional accessories are priced individually - ask your seller



Starting from 7,8 GBP/pcs.

The images in the catalogue are for illustrative purposes only and the appearance of individual accessories may vary throughout the year, depending on availability.



Quick assembly



Easy transport



Printing technology: UV

# EAS COVER

L04390



## Information

**External dimensions [mm]**

**(W x D x H)**

300x50x1600

**Weight [kg]**

0,5

**Logistic dimensions [mm]**

**(W x D x H)**

800x350x6

## Details

- a rectangular EAS system cover made of solid white/white cardboard
- easy and quick assembly
- very large area for marketing communication
- possibility of placing various images on the front and back
- divided in half for transport purposes
- various formats are available, adapted to the size of the EAS systems - check price list

## Additional accessories

- individual packaging

**Additional accessories are priced individually - ask your seller**



**Starting from 5,2 GBP/pcs.**

The images in the catalogue are for illustrative purposes only and the appearance of individual accessories may vary throughout the year, depending on availability.



**Quick assembly**



**Easy transport**



**Printing technology: UV**

# POS PRICE LIST

## SHELF STANDS

Product	UV digital printing 4+0							Technical specifications				
	10 pcs	20 pcs	50 pcs	100 pcs	200 pcs	300 pcs	500 pcs	Material	Weight [kg]	Load per shelf [kg]	External dimensions [mm]	Logistic dimensions [mm]
STAND TOPPER 1 L01992	13,51 GBP	12,00 GBP	11,29 GBP	10,65 GBP	10,07 GBP	9,58 GBP	8,70 GBP	B flute	1,5 kg	3 kg	415x285x1310	1380x740x20
STAND TOPPER 2 L02187	38,71 GBP	35,55 GBP	34,06 GBP	32,09 GBP	30,46 GBP	29,10 GBP	26,40 GBP	EB flute	6 kg	15 kg	600x400x1265	1400x660x80
STAND TOPPER 3 L02484	40,49 GBP	38,27 GBP	36,94 GBP	35,03 GBP	33,37 GBP	31,85 GBP	28,91 GBP	EB flute	7 kg	15 kg	600x400x1394	1400x620x70
STAND TOPPER 4 L04956	37,30 GBP	33,99 GBP	32,87 GBP	30,92 GBP	29,42 GBP	28,08 GBP	25,48 GBP	EB flute	7 kg	6 kg	610x410x1450	1120x670x80
STAND TOPPER 5 L02257	33,34 GBP	31,17 GBP	29,43 GBP	27,62 GBP	26,27 GBP	25,00 GBP	22,70 GBP	EB flute	6 kg	6 kg	600x420x1500	1540x640x50
STAND CLASSIC 1 L04950	44,17 GBP	41,98 GBP	40,67 GBP	38,62 GBP	36,81 GBP	35,14 GBP	31,90 GBP	EB flute	8 kg	15 kg	600x400x1400	1420x600x70
STAND CLASSIC 2 L04866	39,99 GBP	37,79 GBP	36,47 GBP	34,59 GBP	32,95 GBP	31,45 GBP	28,54 GBP	EB flute	7 kg	15 kg	600x400x1500	1520x600x70

## MODULAR STANDS

Product	UV digital printing 4+0							Technical specifications				
	10 pcs	20 pcs	50 pcs	100 pcs	200 pcs	300 pcs	500 pcs	Material	Weight [kg]	Load per shelf [kg]	External dimensions [mm]	Logistic dimensions [mm]
MODULAR STAND L02022	31,81 GBP	29,08 GBP	28,14 GBP	26,49 GBP	25,22 GBP	24,01 GBP	21,78 GBP	B flute	3 kg	10 kg	300x400x1660	1212x961x20
MODULAR STAND L04958	50,29 GBP	49,10 GBP	48,38 GBP	46,21 GBP	43,70 GBP	41,98 GBP	40,27 GBP	EB flute	4 kg	15 kg	600x400x1550	1540x1044x28

## HOOK STANDS

Product	UV digital printing 4+0							Technical specifications			
	10 pcs	20 pcs	50 pcs	100 pcs	200 pcs	300 pcs	500 pcs	Material	Weight [kg]	External dimensions [mm]	Logistic dimensions [mm]
HOOK STAND L04959	32,23 GBP	31,19 GBP	30,57 GBP	29,15 GBP	27,84 GBP	26,60 GBP	24,16 GBP	EB flute	5 kg	600x400x1600	701x1600x30

## COUNTERTOP DISPLAYS

Product	UV digital printing 4+0							Technical specifications			
	10 pcs	20 pcs	50 pcs	100 pcs	200 pcs	300 pcs	500 pcs	Material	Weight [kg]	External dimensions [mm]	Logistic dimensions [mm]
COUNTERTOP DISPLAY L04966	3,01 GBP	2,13 GBP	1,93 GBP	1,80 GBP	1,60 GBP	1,40 GBP	1,17 GBP	E flute	0,2 kg	157x155x225	582x685x1,5

## BINS

Product	UV digital printing 4+0							Technical specifications			
	10 pcs	20 pcs	50 pcs	100 pcs	200 pcs	300 pcs	500 pcs	Material	Weight [kg]	External dimensions [mm]	Logistic dimensions [mm]
BIN L04970	6,36 GBP	5,91 GBP	5,63 GBP	5,32 GBP	5,06 GBP	4,83 GBP	4,38 GBP	E flute	0,75 kg	324x218x698	984x495x5
BIN L00559	24,18 GBP	22,48 GBP	20,99 GBP	19,60 GBP	18,63 GBP	17,70 GBP	16,08 GBP	B flute + EB flute	2,5 kg	472x540x777	873x780x30
BIN L06586	19,80 GBP	17,60 GBP	16,60 GBP	15,40 GBP	14,60 GBP	14,00 GBP	12,60 GBP	EB flute	4,7 kg	600x520x808	1165x943x25

## FIGURE STANDEES

Product	UV digital printing 4+0							Technical specifications			
	10 pcs	20 pcs	50 pcs	100 pcs	200 pcs	300 pcs	500 pcs	Material	Weight [kg]	External dimensions [mm]	Logistic dimensions [mm]
FIGURE BIG L04974	24,80 GBP	23,10 GBP	22,08 GBP	20,87 GBP	19,84 GBP	18,93 GBP	17,17 GBP	EB flute	4,8 kg	1470x1980	1470x990x15
FIGURE SMALL L04976	18,70 GBP	15,92 GBP	14,68 GBP	13,77 GBP	12,94 GBP	12,30 GBP	11,15 GBP	EB flute	2,4 kg	965x1500	1500x965x10

## BOARD DISPLAY

Product	UV digital printing 4+0							Technical specifications			
	10 pcs	20 pcs	50 pcs	100 pcs	200 pcs	300 pcs	500 pcs	Material	Weight [kg]	External dimensions [mm]	Logistic dimensions [mm]
BOARD L04977	3,80 GBP	2,20 GBP	1,40 GBP	1,20 GBP	1,00 GBP	0,80 GBP	0,56 GBP	E flute	0,05 kg	149x210	210x149x4
BOARD L04978	3,85 GBP	2,21 GBP	1,60 GBP	1,40 GBP	1,20 GBP	1,00 GBP	0,80 GBP	E flute	0,1 kg	210x297	297x210x4
BOARD L04979	10,56 GBP	8,82 GBP	7,37 GBP	6,40 GBP	5,91 GBP	5,52 GBP	5,01 GBP	EB flute	1,2 kg	707x1000	1000x707x10



## FLYER DISPLAYS

Product	UV digital printing 4+0							Technical specifications			
	10 pcs	20 pcs	50 pcs	100 pcs	200 pcs	300 pcs	500 pcs	Material	Weight [kg]	External dimensions [mm]	Logistic dimensions [mm]
FLYER DISPLAYS L01291	3,21 GBP	2,82 GBP	2,60 GBP	2,40 GBP	2,20 GBP	1,94 GBP	1,77 GBP	E flute	0,16 kg	213x80x300	296x385x5

## CUBES

Product	UV digital printing 4+0							Technical specifications			
	10 pcs	20 pcs	50 pcs	100 pcs	200 pcs	300 pcs	500 pcs	Material	Weight [kg]	External dimensions [mm]	Logistic dimensions [mm]
CUBE L04735	2,38 GBP	1,60 GBP	1,40 GBP	1,20 GBP	1,00 GBP	0,80 GBP	0,60 GBP	E flute	0,1 kg	100x100x100	203x360x4
CUBE L04737	2,20 GBP	2,00 GBP	1,80 GBP	1,60 GBP	1,40 GBP	1,20 GBP	1,01 GBP	E flute	0,2 kg	150x150x150	303x510x4
CUBE L04738	3,36 GBP	2,80 GBP	2,60 GBP	2,40 GBP	2,20 GBP	1,96 GBP	1,78 GBP	E flute	0,3 kg	200x200x200	438x660x4
CUBE L04745	5,18 GBP	4,80 GBP	4,57 GBP	4,31 GBP	4,20 GBP	3,91 GBP	3,54 GBP	E flute	0,6 kg	300x300x300	990x603x4
CUBE L04746	8,83 GBP	8,45 GBP	8,23 GBP	7,82 GBP	7,46 GBP	7,13 GBP	6,47 GBP	E flute	1,1 kg	400x400x400	1290x803x4
CUBE L04750	7,92 GBP	7,56 GBP	7,35 GBP	6,98 GBP	6,66 GBP	6,36 GBP	5,77 GBP	E flute	1,2 kg	500x500x500	580x580x10
CUBE L04755	4,96 GBP	3,79 GBP	3,09 GBP	2,52 GBP	2,20 GBP	2,04 GBP	1,84 GBP	EB flute	0,6 kg	200x200x200	675x412x14
CUBE L04784	8,56 GBP	6,56 GBP	6,17 GBP	5,54 GBP	5,21 GBP	4,96 GBP	4,48 GBP	EB flute	1,1 kg	300x300x300	1005x612x15
CUBE L04785	12,73 GBP	11,71 GBP	11,11 GBP	10,47 GBP	9,94 GBP	9,48 GBP	8,59 GBP	EB flute	2 kg	400x400x400	1305x812x15
CUBE L04787	22,80 GBP	21,82 GBP	21,23 GBP	20,19 GBP	19,26 GBP	18,39 GBP	16,70 GBP	EB flute	4 kg	600x600x600	1905x1212x15
CUBE L04788	32,46 GBP	29,60 GBP	28,27 GBP	26,77 GBP	25,39 GBP	24,20 GBP	21,97 GBP	EB flute	5,2 kg	800x800x800	2510x1612x14
CUBE L04789	17,64 GBP	16,54 GBP	15,43 GBP	14,39 GBP	13,69 GBP	13,00 GBP	11,82 GBP	EB flute	4 kg	600x600x600	720x690x30

## ELLIPSES

Product	UV digital printing 4+0							Technical specifications			
	10 pcs	20 pcs	50 pcs	100 pcs	200 pcs	300 pcs	500 pcs	Material	Weight [kg]	External dimensions [mm]	Logistic dimensions [mm]
ELLIPSES L04429	11,37 GBP	10,96 GBP	10,60 GBP	9,80 GBP	9,40 GBP	9,20 GBP	8,40 GBP	SUB SOLID white/grey	0,7 kg	400x1560	777x400x6
ELLIPSES L04430	11,70 GBP	11,40 GBP	11,20 GBP	10,40 GBP	9,80 GBP	9,58 GBP	9,00 GBP	SUB SOLID white/grey	0,8 kg	400x1900	947x400x6
ELLIPSES L04431	12,24 GBP	11,79 GBP	11,20 GBP	10,40 GBP	9,80 GBP	9,60 GBP	9,20 GBP	SUB SOLID white/grey	0,8 kg	500x1560	777x500x6
ELLIPSES L04432	12,48 GBP	12,02 GBP	12,00 GBP	11,20 GBP	11,00 GBP	10,21 GBP	9,60 GBP	SUB SOLID white/grey	1 kg	500x1900	947x500x6
ELLIPSES L04433	13,15 GBP	12,65 GBP	12,20 GBP	11,20 GBP	10,40 GBP	10,20 GBP	9,80 GBP	SUB SOLID white/grey	1 kg	600x1560	777x600x6
ELLIPSES L04434	15,06 GBP	13,89 GBP	13,00 GBP	12,00 GBP	11,60 GBP	11,40 GBP	10,40 GBP	SUB SOLID white/grey	1,2 kg	600x1900	947x600x6
ELLIPSES L04435	15,13 GBP	14,03 GBP	13,20 GBP	12,20 GBP	11,40 GBP	11,20 GBP	10,60 GBP	SUB SOLID white/grey	1,3 kg	700x1560	777x700x6
ELLIPSES L04436	15,65 GBP	14,81 GBP	14,00 GBP	13,00 GBP	12,80 GBP	12,24 GBP	11,20 GBP	SUB SOLID white/grey	1,5 kg	700x1900	947x700x6

## ANIT-THEFT DETECTOR COVERS (EAS)

Product	UV digital printing 4+0							Technical specifications			
	10 pcs	20 pcs	50 pcs	100 pcs	200 pcs	300 pcs	500 pcs	Material	Weight [kg]	External dimensions [mm]	Logistic dimensions [mm]
ANIT-THEFT DETECTOR COVERS L04387	10,61 GBP	9,97 GBP	9,60 GBP	9,00 GBP	8,40 GBP	8,20 GBP	7,80 GBP	Arktika white/white	0,7 kg	570x1600	800x570x6
ANIT-THEFT DETECTOR COVERS L04388	9,59 GBP	9,24 GBP	9,00 GBP	8,20 GBP	8,00 GBP	7,84 GBP	7,00 GBP	Arktika white/white	0,5 kg	400x1600	800x400x6
ANIT-THEFT DETECTOR COVERS L04389	10,21 GBP	9,85 GBP	9,00 GBP	8,40 GBP	8,20 GBP	8,00 GBP	7,40 GBP	Arktika white/white	0,6 kg	400x1800	900x400x6
ANIT-THEFT DETECTOR COVERS L04390	7,36 GBP	6,89 GBP	6,60 GBP	6,20 GBP	6,00 GBP	5,68 GBP	5,20 GBP	Arktika white/white	0,5 kg	300x50x1600	800x350x6
ANIT-THEFT DETECTOR COVERS L04402	7,82 GBP	7,32 GBP	7,00 GBP	6,40 GBP	6,20 GBP	6,03 GBP	5,60 GBP	Arktika white/white	0,6 kg	300x50x1800	900x350x6

Product	UV digital printing 4+0							Technical specifications			
	10 pcs	20 pcs	50 pcs	100 pcs	200 pcs	300 pcs	500 pcs	Material	Weight [kg]	External dimensions [mm]	Logistic dimensions [mm]
ANIT-THEFT DETECTOR COVERS L04421	10,22 GBP	9,84 GBP	9,20 GBP	8,60 GBP	8,20 GBP	8,00 GBP	7,60 GBP	Arktika white/white	0,6 kg	300x100x1800	900x400x6
ANIT-THEFT DETECTOR COVERS L04422	9,76 GBP	9,40 GBP	8,80 GBP	8,20 GBP	7,80 GBP	7,60 GBP	7,20 GBP	Arktika white/white	0,5 kg	300x100x1600	800x400x6



# PACKAGING CATALOGUE

---

# PACKAGING MENU

## DECORATIVE PACKAGING

SUITCASE BOXES

GIFT BOXES

SMALL BOXES

BOTTLE BOXES

DISPLAY BOXES

## SHIPPING PACKAGING

FEFCO 427 JUST SHIPPING

FEFCO 427 RETURNABLE PACKAGING

AUTO FEFCO 710 RETURNABLE PACKAGING

ROLLBOX PACKAGING

CARDBOARD ENVELOPES

## PRICE LIST

DECORATIVE PACKAGING

HIPPING PACKAGING

## CONTACT



# SUITCASE BOXES

---

## Packaging with a very wide range of applications.

Boxes with a suitcase design are a very practical packaging for sending marketing materials. They can also be a great addition to gifts or a unique case of products, e.g. bedding, blankets or clothes.

They will also work as Starter Packs in the cosmetics, food and training industries.

The packaging makes one-sided or two-sided printing possible in both UV and offset digital technology. They are available in three formats: large, medium and small. We also offer a case with an additional inner flap.

All packages in this group have a comfortable handle that allows them to be carried. They are also very safe and they are a great advertisement for your company. Each of them can be personalised and prepared with individual images.







## LARGE ECO CASE

L02182



### Information

Internal dimensions [mm]  
(W x D x H)

420x330x120

Weight [kg]

0,55

Logistic dimensions [mm]  
(W x D x H)

1165x930x1,5

### Details

- possibility of printing both outside and inside
- material: E cardboard white/white
- possibility of changing the cardboard to a grey/grey variant



Starting from 3,81 GBP/pcs.

Wizualizacje w katalogu są poglądowe i wygląd poszczególnych akcesoriów wyposażenia może się różnić na przestrzeni roku, zależnie od dostępności.



Comfortable and strong  
grip



Any printing technology



## MEDIUM ECO CASE

L02204



### Information

**Internal dimensions [mm]  
(W x D x H)**

380x280x110

**Weight [kg]**

0,45

**Logistic dimensions [mm]  
(W x D x H)**

1024x850x1,5

### Details

- possibility of printing both outside and inside
- material: E cardboard white/white
- possibility of changing the cardboard to a grey/grey variant



**Starting from 3,44 GBP/pcs.**

The images in the catalogue are for illustrative purposes only and the appearance of individual accessories may vary throughout the year, depending on availability.



**Comfortable and strong grip**



**Compact size box**



**Any printing technology**



## SMALL ECO CASE

L02468



### Information

Internal dimensions [mm]  
(W x D x H)

270x218x95

Weight [kg]

0,27

Logistic dimensions [mm]  
(W x D x H)

824x680x1,5

### Details

- possibility of printing both outside and inside
- material: E cardboard white/white
- possibility of changing the cardboard to a grey/grey variant



Starting from 1,99 GBP/pcs.

Wizualizacje w katalogu są poglądowe i wygląd poszczególnych akcesoriów wyposażenia może się różnić na przestrzeni roku, zależnie od dostępności.



Comfortable and strong  
grip



Folds flat for easy  
transport and storage



Any printing technology



## DOUBLE CLOSE CASE

L04742



### Information

**Internal dimensions [mm]  
(W x D x H)**

350x450x60

**Weight [kg]**

0,55

**Logistic dimensions [mm]  
(W x D x H)**

1711x619x1,5

### Details

- possibility of printing both outside and inside
- material: E cardboard white/white
- possibility of changing the cardboard to a grey/grey variant
- glued plastic handle



**Starting from 4,15 GBP/pcs.**

The images in the catalogue are for illustrative purposes only and the appearance of individual accessories may vary throughout the year, depending on availability.



**Comfortable and strong grip**



**Compact size box**



**Any printing technology**

# GIFT BOXES

---

**Packaging from the Gift Box group is an idea for a special occasion.**

Boxes with non-typical formats are designed for occasional and premium products - they underline the uniqueness of the item and attract the eye.

They can be personalised with inserts prepared for a specific product and, of course, custom design.



## DOUBLE GIFT BOX

L04803



### Information

Internal dimensions [mm]  
(W x D x H)

195x79x138

Weight [kg]

0,18

Logistic dimensions [mm]  
(W x D x H)

456x317x5,5

### Details

- the packaging consists of two parts: a box and an insert adapted to the specific product
- material: E cardboard white/white
- possibility of changing the cardboard to a grey/grey variant



Starting from 1,31 GBP/pcs.

Wizualizacje w katalogu są poglądowe i wygląd poszczególnych akcesoriów wyposażenia może się różnić na przestrzeni roku, zależnie od dostępności.



Extra space for another product



Ideal for gift sets



Any printing technology



## BOOKS & ALBUMS BOX

L04965



### Information

Internal dimensions [mm]  
(W x D x H)

75x219x308

Weight [kg]

0,5

Logistic dimensions [mm]  
(W x D x H)

229x88x318

### Details

- the box consists of two parts: a sliding structure and a housing
- a perfect solution for packaging a series of books or catalogues
  - material: E cardboard white/white
  - possibility of changing the cardboard to a grey/grey variant



Starting from 3,99 GBP/pcs.

The images in the catalogue are for illustrative purposes only and the appearance of individual accessories may vary throughout the year, depending on availability.



Additional space for  
marketing messages



Practical in transport  
and storage



Any printing technology

# SURPRISE BOX

L05048



## Information

Internal dimensions [mm]  
(W x D x H)

227x178x68

Weight [kg]

0,24

Logistic dimensions [mm]  
(W x D x H)

529x650x2,5

## Details

- packaging as a set of three elements: a box, a customisable insert for a specific product and wrap
- material: E cardboard white/ white, wrap: solid cardboard white/ white
- possibility of changing the cardboard to a grey/grey variant
- practical possibility of separating the set depending on the needs



Starting from 1,66 GBP/pcs.

Wizualizacje w katalogu są poglądowe i wygląd poszczególnych akcesoriów wyposażenia może się różnić na przestrzeni roku, zależnie od dostępności.



Perfect for a promotional  
or gift set



Possibility of adjusting  
the insert to the product  
and separating the  
elements of the box



Any printing technology

# JAW BOX

L05050



## Information

**Internal dimensions [mm]  
(W x D x H)**

107x154 x92

**Weight [kg]**

0,15

**Logistic dimensions [mm]  
(W x D x H)**

395x715x1,5

## Details

- box with insert - a perfect solution for Christmas ornaments, porcelain or other decorative items
- material: E cardboard white/white
- possibility of changing the cardboard to a grey/grey variant
- insert adjustable to match the product



**Starting from 0,99 GBP/pcs.**

The images in the catalogue are for illustrative purposes only and the appearance of individual accessories may vary throughout the year, depending on availability.



**The insert can be adapted  
to the object**



**Attractive format**



**Any printing technology**

# CUP BOX

L02074



## Information

Internal dimensions [mm]  
(W x D x H)

102x74x106

Weight [kg]

0,07

Logistic dimensions [mm]  
(W x D x H)

259x181x4,5

## Details

- box with a cut window for better exposure of the product, e.g. a gadget or a toy
- material: E cardboard white/white
- possibility of changing the cardboard to a grey/grey variant



Starting from 0,54 GBP/pcs.

Wizualizacje w katalogu są poglądowe i wygląd poszczególnych akcesoriów wyposażenia może się różnić na przestrzeni roku, zależnie od dostępności.



Ideal for soft toys, mugs,  
toys



Perfect for a promotional  
or gift set



Any printing technology

# SMALL BOXES

---

**Small boxes for small items and limited series. They underline the unique nature of the packed product.**

They are great for the food industry as packaging, e.g. for honey jars or pots, cosmetic, jewellery.

They will also be an interesting packaging for small items of clothing, such as belts, gloves or wallets, underlining their character.



# WINDOWS BOX

L02506



Back

Front



## Information

Internal dimensions [mm]  
(W x D x H)

170x78x97

Weight [kg]

0,1

Logistic dimensions [mm]  
(W x D x H)

260x252x4,5

## Details

- box with two corner windows, perfect for e.g. promotional food sets
- the window at the front and at the back makes it possible to display two different products
- material: E cardboard white/white
- possibility of changing the cardboard to a grey/grey variant



Starting from 0,73 GBP/pcs.

Wizualizacje w katalogu są poglądowe i wygląd poszczególnych akcesoriów wyposażenia może się różnić na przestrzeni roku, zależnie od dostępności.



Perfect for toys or  
gadgets



Two windows on the  
sides allow products to  
be displayed



Any printing technology



# HONEY BOX

L03458



## Information

Internal dimensions [mm]  
(W x D x H)

190x65x100

Weight [kg]

0,11

Logistic dimensions [mm]  
(W x D x H)

273x260x6

## Details

- a box with an insert perfect as a packaging for jars with honey or other food products
- jar opening diameter 45 mm
- material: E cardboard grey/grey
- additional cardboard options possible: E white/white and E white/grey



Starting from 0,94 GBP/pcs.

The images in the catalogue are for illustrative purposes only and the appearance of individual accessories may vary throughout the year, depending on availability.



Attractive eco-look



Can be sized to suit the quantity and size of the products



Any printing technology

## LONG BOX

LO4558



### Information

Internal dimensions [mm]  
(W x D x H)

445x57x28

Weight [kg]

0,11

Logistic dimensions [mm]  
(W x D x H)

589x248x1,5

### Details

- long and narrow packaging for products with a non-typical format, e.g. household appliances or electronics
- material: E cardboard white/white
- possibility of changing the cardboard to a grey/grey variant



Starting from 0,69 GBP/pcs.

Wizualizacje w katalogu są poglądowe i wygląd poszczególnych akcesoriów wyposażenia może się różnić na przestrzeni roku, zależnie od dostępności.



Robust, secure closure



Economical for transport  
and storage



Any printing technology

# PLATE BOX

L05056



## Information

**Internal dimensions [mm]  
(W x D x H)**

250x224x48

**Weight [kg]**

0,13

**Logistic dimensions [mm]  
(W x D x H)**

355x660x1,5

## Details

- a flat, practical box with a lock for clothing items, albums, books or records
- material: E cardboard white/white
- possibility of printing on the outside and inside
- possibility of changing the cardboard to a grey/grey variant



**Starting from 0,85 GBP/pcs.**

The images in the catalogue are for illustrative purposes only and the appearance of individual accessories may vary throughout the year, depending on availability.



**Possibility of printing  
inside**



**Economical for transport  
and storage**



**Any printing technology**

# BOTTLE BOXES

---

## Packaging group for wine and other liquors.

Boxes from this group are ideal as a gift packaging for wine, they also provide security for shipping. Made of corrugated cardboard, they can be fully printed or have the form of a classic craft packaging, perfectly fitting into the eco trend.



## WINE BOX

L04280



### Information

Internal dimensions [mm]  
(W x D x H)

82x82x296

Weight [kg]

0,13

Logistic dimensions [mm]  
(W x D x H)

444x258x6

### Details

- classic wine box consisting of two parts - a body and a lid
- material: E cardboard white/white
- possibility of changing the cardboard to a grey/grey variant



Starting from 1,04 GBP/pcs.

Wizualizacje w katalogu są poglądowe i wygląd poszczególnych akcesoriów wyposażenia może się różnić na przestrzeni roku, zależnie od dostępności.



Folds flat for easy  
transport and storage



Elegant format



Any printing technology

## WINE BOX

L04320



### Information

**Internal dimensions [mm]  
(W x D x H)**

75x75x294

**Weight [kg]**

0,13

**Logistic dimensions [mm]  
(W x D x H)**

434x546x1,5

### Details

- a box for wine opening from the side, horizontally
- material: E cardboard white/white
- possibility of changing the cardboard to a grey/grey variant



**Starting from 0,8 GBP/pcs.**

The images in the catalogue are for illustrative purposes only and the appearance of individual accessories may vary throughout the year, depending on availability.



**Convenient and safe  
in transport**



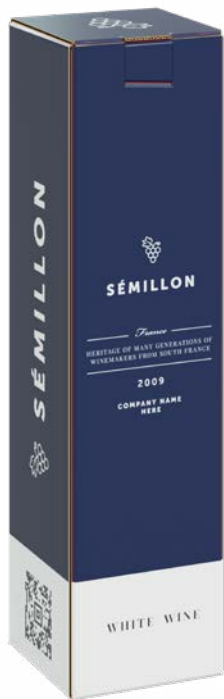
**Extra space for commu-  
nication inside**



**Any printing technology**

## WINE BOX

LO4328



### Information

Internal dimensions [mm]  
(W x D x H)

75x75x294

Weight [kg]

0,1

Logistic dimensions [mm]  
(W x D x H)

452x153x4,5

### Details

- box closed from the top with a lid and a lock
- material: E cardboard white/white
- possibility of changing the cardboard to a grey/grey variant or white/grey



Starting from 0,7 GBP/pcs.

Wizualizacje w katalogu są poglądowe i wygląd poszczególnych akcesoriów wyposażenia może się różnić na przestrzeni roku, zależnie od dostępności.



Convenient and safe  
in transport



Robust, secure closure



Any printing technology



## WINE BOX

L04689



### Information

**Internal dimensions [mm]  
(W x D x H)**

90x90x340

**Weight [kg]**

0,12

**Logistic dimensions [mm]  
(W x D x H)**

523x185x4,5

### Details

- practical wine box with handle
- material: E cardboard white/white
- possibility of changing the cardboard to a grey/grey variant or white/grey



**Starting from 1,02 GBP/pcs.**

The images in the catalogue are for illustrative purposes only and the appearance of individual accessories may vary throughout the year, depending on availability.



**A strong handle that comes out of the box itself**



**Folds flat for easy transport and storage**



**Any printing technology**

## WINE BOX

L05047



### Information

Internal dimensions [mm]  
(W x D x H)

135x335x75

Weight [kg]

0,3

Logistic dimensions [mm]  
(W x D x H)

865x462x4

### Details

- wine box with insert and the possibility of adapting it to non-typical bottle shapes
- material: E cardboard white/white
- possibility of changing the cardboard to a grey/grey variant or white/grey
- extra space for communication inside the box



Starting from 2,08 GBP/pcs.

Wizualizacje w katalogu są poglądowe i wygląd poszczególnych akcesoriów wyposażenia może się różnić na przestrzeni roku, zależnie od dostępności.



Possibility of placing an additional printed insert inside



Elegant format



Any printing technology

# DISPLAY BOXES

---

**Packaging that will work both as a protection for products and attractive display.**

They will fit perfectly into the shop space both on the counter or at the cash register, as well as on the shelves or in the sale zone. The lid and drawer make it easy to handle and display products. All it takes is a single pull.



## DISPLAY ONE

LO2072



### Information

**Internal dimensions [mm]  
(W x D x H)**

190x140x250

**Weight [kg]**

0,25

**Logistic dimensions [mm]  
(W x D x H)**

655x450x4,5

### Details

- large display box perfect for pens, candy or small cosmetics
- material: E cardboard white/white
- possibility of changing the cardboard to a grey/grey variant



**Starting from 1,72 GBP/pcs.**

Wizualizacje w katalogu są poglądowe i wygląd poszczególnych akcesoriów wyposażenia może się różnić na przestrzeni roku, zależnie od dostępności.



**The box interior can be printed**



**Handy product drawer**



**Any printing technology**

## DISPLAY TWO

LO2073



### Information

Internal dimensions [mm]  
(W x D x H)

130x120x150

Weight [kg]

0,13

Logistic dimensions [mm]  
(W x D x H)

632x394x1,5

### Details

- small display box perfect for pens, candy or small cosmetics
- material: E cardboard white/white
- possibility of changing the cardboard to a grey/grey variant



Starting from 0,94 GBP/pcs.

The images in the catalogue are for illustrative purposes only and the appearance of individual accessories may vary throughout the year, depending on availability.



Makes it easier to transport and expose your products



Handy product drawer



Any printing technology

# PRICE LIST: DECORATIVE PACKAGING

## SUITCASE BOXES

Product	UV digital printing 4+0					Technical specifications			
	50 pcs	100 pcs	200 pcs	300 pcs	500 pcs	Material	Weight [kg]	Internal dimensions [mm]	Logistic dimensions [mm]
LARGE ECO CASE L02182	4,93 GBP	4,65 GBP	4,41 GBP	4,20 GBP	3,81 GBP	E flute	0,55 kg	420x330x120	1165x930x1,5
MEDIUM ECO CASE L02204	4,45 GBP	4,19 GBP	3,98 GBP	3,79 GBP	3,44 GBP	E flute	0,45 kg	380x280x110	1024x850x1,5
SMALL ECO CASE L02468	2,77 GBP	2,47 GBP	2,32 GBP	2,21 GBP	1,99 GBP	E flute	0,27 kg	270x218x95	824x680x1,5
DOUBLE CLOSE CASE L04742	5,35 GBP	5,05 GBP	4,79 GBP	4,57 GBP	4,15 GBP	E flute	0,55 kg	350x450x60	1711x619x1,5

## GIFT BOXES

Product	UV digital printing 4+0					Technical specifications			
	50 pcs	100 pcs	200 pcs	300 pcs	500 pcs	Material	Weight [kg]	Internal dimensions [mm]	Logistic dimensions [mm]
DOUBLE GIFT BOX L04803	2,44 GBP	1,96 GBP	1,65 GBP	1,50 GBP	1,31 GBP	E flute	0,18 kg	195x79x138	456x317x5,5
BOOKS & ALBUMS BOX L04965	5,57 GBP	5,04 GBP	4,69 GBP	4,41 GBP	3,99 GBP	E flute	0,5 kg	75x219x308	229x88x318
SURPRISE BOX L05048	2,70 GBP	2,26 GBP	2,00 GBP	1,86 GBP	1,66 GBP	E flute	0,24 kg	227x178x68	529x650x2,5
JAW BOX L05050	1,45 GBP	1,28 GBP	1,17 GBP	1,10 GBP	0,99 GBP	E flute	0,15 kg	107x154x92	395x715x1,5
CUP BOX L02074	1,10 GBP	0,83 GBP	0,69 GBP	0,63 GBP	0,54 GBP	E flute	0,07 kg	102x74x106	259x181x4,5

## SMALL BOX

Product	UV digital printing 4+0					Technical specifications			
	50 pcs	100 pcs	200 pcs	300 pcs	500 pcs	Material	Weight [kg]	Internal dimensions [mm]	Logistic dimensions [mm]
WINDOWS BOX L02506	1,29 GBP	1,03 GBP	0,88 GBP	0,81 GBP	0,73 GBP	E flute	0,1 kg	170x78x97	260x252x4,5
HONEY BOX L03458	1,53 GBP	1,33 GBP	1,15 GBP	1,06 GBP	0,94 GBP	E flute	0,11 kg	190x65x100	273x260x6
LONG BOX L04558	1,17 GBP	1,01 GBP	0,86 GBP	0,79 GBP	0,69 GBP	E flute	0,11 kg	445x57x28	589x248x1,5
PLATE BOX L05056	1,49 GBP	1,19 GBP	1,03 GBP	0,94 GBP	0,85 GBP	E flute	0,13 kg	250x224x48	355x660x1,5

## BOTTLE BOXES

Product	UV digital printing 4+0					Technical specifications			
	50 pcs	100 pcs	200 pcs	300 pcs	500 pcs	Material	Weight [kg]	Internal dimensions [mm]	Logistic dimensions [mm]
WINE BOX L04280	1,51 GBP	1,33 GBP	1,23 GBP	1,15 GBP	1,04 GBP	E flute	0,13 kg	82x82x296	444x258x6
WINE BOX L04320	1,39 GBP	1,11 GBP	0,96 GBP	4,42 GBP	0,80 GBP	E flute	0,13 kg	75x75x294	434x546x1,5
WINE BOX L04328	1,26 GBP	0,99 GBP	0,85 GBP	0,78 GBP	0,70 GBP	E flute	0,1 kg	75x75x294	452x153x4,5
WINE BOX L04689	1,53 GBP	1,37 GBP	1,22 GBP	1,14 GBP	1,02 GBP	E flute	0,12 kg	90x90x340	523x185x4,5
WINE BOX L05047	2,88 GBP	2,57 GBP	2,42 GBP	2,30 GBP	2,08 GBP	E flute	0,3 kg	135x335x75	865x462x4

## DISPLAY BOXES

Product	UV digital printing 4+0					Technical specifications			
	50 pcs	100 pcs	200 pcs	300 pcs	500 pcs	Material	Weight [kg]	Internal dimensions [mm]	Logistic dimensions [mm]
DISPLAY ONE L02072	2,48 GBP	2,17 GBP	2,03 GBP	1,89 GBP	1,72 GBP	E flute	0,25 kg	190x140x250	655x450x4,5
DISPLAY TWO L02073	1,60 GBP	1,30 GBP	1,13 GBP	1,04 GBP	0,94 GBP	E flute	0,13 kg	130x120 x150	632x394x1,5



# FEFCO 427 JUST SHIPPING

---

**Fefco 427 folding box is the most versatile and popular packaging shape.**

Thanks to the overlapping lid, transported items are protected against loss or damage. The proportions of this packaging allow for convenient storage. It's safe to say that it is one of the most popular packaging models around the world.

Possible printing technologies: UV, flexo, offset — also double-sided



# JUST FEFCO 427 SHIPPING

LO2114



## Information

Internal dimensions [mm]  
(W x D x H)

207x105x70

Weight [kg]

0,11

Logistic dimensions [mm]  
(W x D x H)

524x431x1,5

## Details

- sample FEFCO 427 folding box, one-sided printing on grey/grey cardboard 1 colour
- material: E cardboard grey/grey
- additional cardboard options possible: E white/white and E white/grey
- possibility of printing both outside and inside



Starting from 0,46 GBP/pcs.

Wizualizacje w katalogu są poglądowe i wygląd poszczególnych akcesoriów wyposażenia może się różnić na przestrzeni roku, zależnie od dostępności.



Possibility to personalise  
the packaging



Follow the latest  
ecological trends



Any printing technology

# JUST FEFCO 427 SHIPPING

L01844



## Information

**Internal dimensions [mm]  
(W x D x H)**

337x255x95

**Weight [kg]**

0,29

**Logistic dimensions [mm]  
(W x D x H)**

804x749x1,5

## Details

- sample FEFCO 427 folding box, two-sided printing on white/white cardboard full colour
- material: E cardboard white/white
- additional cardboard options possible: E grey/grey and E white/grey
- possibility of printing both outside and inside
- availability of various formats - refer to the price list



**Starting from 1,08 GBP/pcs.**

The images in the catalogue are for illustrative purposes only and the appearance of individual accessories may vary throughout the year, depending on availability.



**Possibility to personalise  
the packaging**



**Possibility of printing  
inside**



**Any printing technology**

# JUST FEFCO 427 SHIPPING

L01900



## Information

**Internal dimensions [mm]  
(W x D x H)**

305x226x47

**Weight [kg]**

0,16

**Logistic dimensions [mm]  
(W x D x H)**

528x599x1,5

## Details

- sample FEFCO 427 folding box, one-sided printing on white/grey cardboard full colour
- material: E cardboard white/white
- additional cardboard options possible: E white/white and E white/grey
- possibility of printing both outside and inside



Starting from 0,63 GBP/pcs.

Wizualizacje w katalogu są poglądowe i wygląd poszczególnych akcesoriów wyposażenia może się różnić na przestrzeni roku, zależnie od dostępności.



**Possibility to personalise  
the packaging**



**Possibility of printing  
inside**



**Any printing technology**

# JUST FEFCO 427 SHIPPING

L01745



## Information

**Internal dimensions [mm]  
(W x D x H)**

145x156x107

**Weight [kg]**

0,19

**Logistic dimensions [mm]  
(W x D x H)**

640x608x1,5

## Details

- sample FEFCO 427 folding box, two-sided printing on white/white cardboard full colour
- material: E cardboard white/white
- additional cardboard options possible: E grey/grey and E white/grey
- possibility of printing both outside and inside
- availability of various formats - refer to the price list



**Starting from 0,66 GBP/pcs.**

The images in the catalogue are for illustrative purposes only and the appearance of individual accessories may vary throughout the year, depending on availability.



**Possibility to personalise  
the packaging**



**Folding box with print  
inside**



**Any printing technology**

# FEFCO 427 RETURNABLE PACKAGING

**Do you sell on the Internet? Do you respect your time and comfort? Do you want a good opinion? Do you want to properly secure products during transport? Check out the offer and choose the right packaging for you.**

We know how important it is to feel comfort, safety and time needed to deliver products to your recipients. Every day and every hour is important, because the customer is waiting for their package. Here is our offer of the FEFCO 427 folding packaging in the version with strips, also with the possibility of a returning strip.



# JUST FEFCO 427 RETURNABLE

L01471



## Information

Internal dimensions [mm]  
(W x D x H)

217x153x55

Weight [kg]

0,1

Logistic dimensions [mm]  
(W x D x H)

482x472x1,5

## Details

- FEFCO 427 folding box with strips, one-sided printing on grey/grey cardboard 1 colour
- material: E cardboard grey/grey
- additional cardboard options possible: E white/white and E white/grey
- possibility of printing both outside and inside
- availability of various formats - refer to the price list



Starting from 0,25 GBP/pcs.

Wizualizacje w katalogu są poglądowe i wygląd poszczególnych akcesoriów wyposażenia może się różnić na przestrzeni roku, zależnie od dostępności.



Easy closing  
- remove the  
strip and press



Sizes and capacities adapted to automatic parcel machines



Possibility to personalise the packaging



Any printing technology



# JUST FEFCO 427 RETURNABLE

L00067-B4



## Information

**Internal dimensions [mm]  
(W x D x H)**

290x185x70

**Weight [kg]**

0,16

**Logistic dimensions [mm]  
(W x D x H)**

609x332x8

## Details

- FEFCO 427 folding box with strips, one-sided printing on white/white cardboard full colour
- material: E cardboard white/white
- additional cardboard options possible: E grey/grey and E white/grey
- possibility of printing both outside and inside
- availability of various formats - refer to the price list



**Starting from 0,03 GBP/pcs.**

The images in the catalogue are for illustrative purposes only and the appearance of individual accessories may vary throughout the year, depending on availability.



**Easy closing  
- remove the  
strip and press**



**Folded in 3  
seconds**



**Possibility to  
personalise the  
packaging**



**Any printing  
technology**

# AUTO FEFCO 710 RETURNABLE PACKAGING

---

**Do you sell on the Internet? Do you respect your time and comfort? Do you want a good opinion? Do you want to properly secure products during transport? Check out the offer and choose the right packaging for you.**

Extremely simple and easy to assemble - cardboard packaging with reinforced automatic bottom and additionally secured sides.

Thanks to a very simple design, it can be folded in 3 seconds: just remove the strip and seal it.



# AUTO FEFCO 710 RETURNABLE

L00084-B3



## Information

Internal dimensions [mm]  
(W x D x H)

280x200x175

Weight [kg]

0,24

Logistic dimensions [mm]  
(W x D x H)

486x385x15

## Details

- FEFCO 710 folding box with strips and automatic bottom, one-sided printing on white/white cardboard full colour
  - material: B wave white/white
- additional cardboard options possible: B grey/grey and B white/grey
- possibility of printing both outside and inside
  - availability of various formats and printing technologies - refer to the price list



Starting from 0,48 GBP/pcs.

Wizualizacje w katalogu są poglądowe i wygląd poszczególnych akcesoriów wyposażenia może się różnić na przestrzeni roku, zależnie od dostępności.



Easy closing  
- remove the  
strip and press



Automatic extra-  
-strong bottom



Possibility to  
personalise the  
packaging



Any printing  
technology

# AUTO FEFCO 710 RETURNABLE

L00367-B5



## Information

**Internal dimensions [mm]  
(W x D x H)**

195x147x100

**Weight [kg]**

0,16

**Logistic dimensions [mm]  
(W x D x H)**

486x385x15

## Details

- FEFCO 427 folding box with strips and automatic bottom, one-sided printing on grey/grey cardboard 1 colour
  - material: E cardboard grey/grey
- additional cardboard options possible: E white/white and E white/grey
- possibility of printing both outside and inside
  - availability of various formats and printing technologies - refer to the price list



**Starting from 0,33 GBP/pcs.**

The images in the catalogue are for illustrative purposes only and the appearance of individual accessories may vary throughout the year, depending on availability.



**Easy closing**  
- remove the strip and press



**Automatic extra-strong bottom and additionally secured sides**



**Possibility to personalise the packaging**



**Any printing technology**

# ROLLBOX PACKAGING

---

**Do you sell on the Internet? Do you respect your time and comfort? Do you want a good opinion? Do you want to properly secure products during transport? Check out the offer and choose the right packaging for you.**

Universal and spacious cardboard packaging that folds extremely quickly. Thanks to flat storage, you will save a lot of space. The right cardboard and various dimensions will allow you to match the packaging perfectly to your product.



# ROLLBOX M

L00070-B3



## Information

**Internal dimensions [mm]  
(W x D x H)**

300x210x90

**Weight [kg]**

0,13

**Logistic dimensions [mm]  
(W x D x H)**

718x342x3

## Details

- Rollbox packaging with the possibility of adapting the format to the size of the packaged product
- Flexo printing on E grey/grey cardboard 1 colour
  - no possibility to open without leaving traces
- availability of various formats - refer to the price list



**Starting from 0,25 GBP/pcs.**

Wizualizacje w katalogu są poglądowe i wygląd poszczególnych akcesoriów wyposażenia może się różnić na przestrzeni roku, zależnie od dostępności.



**Easy closing**  
- remove the  
strip and press



**Sizes and capacities**  
adapted to automa-  
tic parcel machines



**Space-saving thanks to  
flat storage**



# CARDBOARD ENVELOPES

---

**Do you sell on the Internet? Do you respect your time and comfort? Do you want a good opinion? Do you want to properly secure products during transport? Check out the offer and choose the right packaging for you.**

Shipping documents, catalogues, books or small and flat things? A cardboard envelope is the perfect choice for you.

The simplest, most common and proven shipping method.





## A4 envelope

L00074-B3



### Information

**Internal dimensions [mm]  
(W x D x H)**

210x308x48

**Weight [kg]**

0,12

**Logistic dimensions [mm]  
(W x D x H)**

224x237x10

### Details

- envelope type packaging
- Flexo printing on E grey/grey cardboard 1 colour
- no possibility to open without leaving traces
- availability of various formats - refer to the price list



**Starting from 0,27 GBP/pcs.**

Wizualizacje w katalogu są poglądowe i wygląd poszczególnych akcesoriów wyposażenia może się różnić na przestrzeni roku, zależnie od dostępności.



**Easy closing**  
- remove the  
strip and press



**Sizes and capacities**  
adapted to automa-  
tic parcel machines



**Space-saving thanks to  
flat storage**

# PRICE LIST: SHIPPING PACKAGING

## FEFCO 427 JUST SHIPPING

JUST FEFCO 427	DIGITAL PRINT 4+0/ pc.						OFFSET print 4+0/ pc.				Material	Weight [kg]	Internal dimensions [mm]	Logistic dimensions [mm]
	50 pcs	100 pcs	200 pcs	300 pcs	500 pcs	700 pcs	1000 pcs	1500 pcs	2000 pcs	3000 pcs				
L02287	1,81 GBP	1,52 GBP	1,35 GBP	1,29 GBP	1,16 GBP	1,06 GBP	1,05 GBP	0,86 GBP	0,78 GBP	0,67 GBP	E flute, Kemiart 185 cardboard	0,17 kg	192x151,5x88	578x578x1,5
L02114	1,68 GBP	1,35 GBP	1,16 GBP	1,07 GBP	0,97 GBP	0,89 GBP	0,86 GBP	0,63 GBP	0,56 GBP	0,46 GBP	E flute, Kemiart 185 cardboard	0,11 kg	207x105x70	524x431x1,5
L02136	1,86 GBP	1,56 GBP	1,39 GBP	1,33 GBP	1,19 GBP	1,09 GBP	1,05 GBP	0,84 GBP	0,77 GBP	0,65 GBP	E flute, Kemiart 185 cardboard	0,14 kg	216x135,5x77	558x513x1,5
L02446	1,89 GBP	1,51 GBP	1,30 GBP	1,20 GBP	1,08 GBP	1,00 GBP	0,96 GBP	0,72 GBP	0,63 GBP	0,53 GBP	E flute, Kemiart 185 cardboard	0,12 kg	230x100x75	564x436x1,5
L02366	1,93 GBP	1,67 GBP	1,56 GBP	1,45 GBP	1,31 GBP	1,21 GBP	1,09 GBP	0,89 GBP	0,81 GBP	0,68 GBP	E flute, Kemiart 185 cardboard	0,18 kg	235x195,5x77	633x577x1,5
L02024	2,16 GBP	1,87 GBP	1,74 GBP	1,62 GBP	1,47 GBP	1,35 GBP	1,18 GBP	0,98 GBP	0,91 GBP	0,78 GBP	E flute, Kemiart 185 cardboard	0,24 kg	245x196x102	704x688x1,5
L02107	3,51 GBP	3,28 GBP	3,05 GBP	2,89 GBP	2,62 GBP	2,42 GBP	2,00 GBP	1,62 GBP	1,45 GBP	1,23 GBP	E flute, Kemiart 185 cardboard	0,37 kg	251x201x151	861x884x1,5
L01534	2,45 GBP	2,24 GBP	2,10 GBP	1,99 GBP	1,80 GBP	1,66 GBP	1,26 GBP	1,03 GBP	0,92 GBP	0,81 GBP	E flute, Kemiart 185 cardboard	0,25 kg	260x200x105	724x712x1,5
L01533	1,97 GBP	1,70 GBP	1,59 GBP	1,48 GBP	1,34 GBP	1,23 GBP	1,03 GBP	0,84 GBP	0,77 GBP	0,66 GBP	E flute, Kemiart 185 cardboard	0,19 kg	300x200x70	618x615x1,5
L02445	2,10 GBP	1,82 GBP	1,69 GBP	1,57 GBP	1,43 GBP	1,31 GBP	1,26 GBP	1,04 GBP	0,96 GBP	0,83 GBP	E flute, Kemiart 185 cardboard	0,23 kg	260x150x110	732x639x1,5
L03114	2,65 GBP	2,24 GBP	1,99 GBP	1,91 GBP	1,71 GBP	1,57 GBP	1,54 GBP	1,14 GBP	0,97 GBP	0,77 GBP	E flute, Kemiart 185 cardboard	0,15 kg	260x155x70	574x531x1,5
L03128	2,07 GBP	1,79 GBP	1,67 GBP	1,55 GBP	1,41 GBP	1,29 GBP	1,18 GBP	0,97 GBP	0,89 GBP	0,77 GBP	E flute, Kemiart 185 cardboard	0,21 kg	285x145,50x97	707x593x1,5
L02269	2,18 GBP	1,88 GBP	1,76 GBP	1,63 GBP	1,48 GBP	1,36 GBP	1,20 GBP	0,99 GBP	0,91 GBP	0,79 GBP	E flute, Kemiart 185 cardboard	0,21 kg	285x225,5x77	693x627x1,5
L02279	3,68 GBP	3,44 GBP	3,20 GBP	3,03 GBP	2,71 GBP	2,54 GBP	1,93 GBP	1,53 GBP	1,36 GBP	1,17 GBP	E flute, Kemiart 185 cardboard	0,29 kg	285x235,5x107	799x743x1,5
L02395	3,99 GBP	3,73 GBP	3,47 GBP	3,29 GBP	2,98 GBP	2,76 GBP	2,13 GBP	1,72 GBP	1,54 GBP	1,31 GBP	B flute, Kemiart 185 cardboard	0,41 kg	290x226x124	843x853x3
L01844	3,37 GBP	3,14 GBP	2,92 GBP	2,77 GBP	2,51 GBP	2,32 GBP	1,78 GBP	1,41 GBP	1,26 GBP	1,08 GBP	E flute, Kemiart 185 cardboard	0,29 kg	337x255x95	804x749x1,5

JUST FEFCO 427	DIGITAL PRINT 4+0/ pc.						OFFSET print 4+0/ pc.				Material	Weight [kg]	Internal dimen- sions [mm]	Logistic dimen- sions [mm]
	50 pcs	100 pcs	200 pcs	300 pcs	500 pcs	700 pcs	1000 pcs	1500 pcs	2000 pcs	3000 pcs				
L03076	2,72 GBP	2,43 GBP	2,28 GBP	2,17 GBP	1,96 GBP	1,81 GBP	1,46 GBP	1,23 GBP	1,15 GBP	1,01 GBP	E flute, Kemiart 185 cardboard	0,30 kg	415x160x115	672x905x1,5
L02112	1,79 GBP	1,43 GBP	1,23 GBP	1,14 GBP	1,02 GBP	0,94 GBP	0,91 GBP	0,61 GBP	0,50 GBP	0,39 GBP	E flute, Kemiart 185 cardboard	0,08 kg	207x105x49	437x366x1,5
L02111	1,73 GBP	1,38 GBP	1,19 GBP	1,10 GBP	0,99 GBP	0,91 GBP	0,86 GBP	0,60 GBP	0,53 GBP	0,44 GBP	E flute, Kemiart 185 cardboard	0,10 kg	229x155x46	454x442x1,5
L01789	1,62 GBP	1,36 GBP	1,21 GBP	1,16 GBP	1,04 GBP	0,95 GBP	0,92 GBP	0,71 GBP	0,62 GBP	0,52 GBP	E flute, Kemiart 185 cardboard	0,14 kg	250x191x56	556x503x1,5
L01692	1,70 GBP	1,43 GBP	1,27 GBP	1,21 GBP	1,09 GBP	1,00 GBP	0,92 GBP	0,73 GBP	0,67 GBP	0,56 GBP	E flute, Kemiart 185 cardboard	0,15 kg	305x216x44	513x572x1,5
L01900	2,54 GBP	2,19 GBP	2,01 GBP	1,85 GBP	1,09 GBP	1,00 GBP	1,03 GBP	0,83 GBP	0,76 GBP	0,63 GBP	E flute, Kemiart 185 cardboard	0,16 kg	305x226x47	528x599x1,5
L02143	1,69 GBP	1,30 GBP	1,17 GBP	1,04 GBP	0,95 GBP	0,86 GBP	0,84 GBP	0,62 GBP	0,54 GBP	0,44 GBP	E flute, Kemiart 185 cardboard	0,09 kg	215x165,5x37	453x397x1,5
L02570	1,68 GBP	1,50 GBP	1,32 GBP	1,23 GBP	1,09 GBP	1,00 GBP	0,96 GBP	0,72 GBP	0,63 GBP	0,53 GBP	E flute, Kemiart 185 cardboard	0,12 kg	286x105,5x67	453x397x1,5
L02571	2,05 GBP	1,77 GBP	1,65 GBP	1,53 GBP	1,39 GBP	1,28 GBP	1,11 GBP	0,91 GBP	0,83 GBP	0,71 GBP	E flute, Kemiart 185 cardboard	0,19 kg	276x220,5x67	453x397x1,5
L02172	1,92 GBP	1,54 GBP	1,32 GBP	1,22 GBP	1,10 GBP	1,01 GBP	0,95 GBP	0,70 GBP	0,61 GBP	0,50 GBP	E flute, Kemiart 185 cardboard	0,11 kg	298x175,5x37	453x397x1,5
L03148	1,87 GBP	1,62 GBP	1,51 GBP	1,40 GBP	1,27 GBP	1,17 GBP	1,06 GBP	0,87 GBP	0,79 GBP	0,67 GBP	E flute, Kemiart 185 cardboard	0,16 kg	335x195,5x52	453x397x1,5
L01745	1,92 GBP	1,66 GBP	1,55 GBP	1,44 GBP	1,31 GBP	1,20 GBP	1,04 GBP	0,85 GBP	0,78 GBP	0,66 GBP	E flute, Kemiart 185 cardboard	0,19 kg	145x156x107	640x608x1,5
L02254	1,58 GBP	1,39 GBP	1,27 GBP	1,20 GBP	1,08 GBP	0,99 GBP	0,96 GBP	0,72 GBP	0,63 GBP	0,53 GBP	E flute, Kemiart 185 cardboard	0,11 kg	175x175x55	526x429x1,5
L02792	3,02 GBP	2,42 GBP	2,09 GBP	1,92 GBP	1,73 GBP	1,60 GBP	1,35 GBP	1,14 GBP	1,06 GBP	0,93 GBP	EB flute, Kemiart 185 cardboard	0,38 kg	230x230x75	713x628x4,2
L02652	4,60 GBP	4,33 GBP	4,11 GBP	3,92 GBP	3,55 GBP	3,28 GBP	2,66 GBP	2,21 GBP	1,96 GBP	1,74 GBP	E flute, Kemiart 185 cardboard	0,53 kg	335x345,5x147	1139x953x1,5

Product	DIGITAL PRINT 4+0/ pc.					Technical specifications			
	10-50 pcs	100 pcs	200 pcs	300 pcs	500 pcs	Material	Weight [kg]	Internal dimensions [mm]	Logistic dimensions [mm]
L04495	0,72 GBP	0,64 GBP	0,58 GBP	0,52 GBP	0,45 GBP	E cardboard	0,06 kg	150x123x35	359x322x1,5
L04496	1,03 GBP	0,91 GBP	0,82 GBP	0,74 GBP	0,65 GBP	E cardboard	0,11 kg	270x180x35	473x442x1,5
L04497	1,16 GBP	1,03 GBP	0,93 GBP	0,83 GBP	0,73 GBP	E cardboard	0,10 kg	250x180x40	468x442x1,5
L04498	1,18 GBP	1,04 GBP	0,94 GBP	0,85 GBP	0,74 GBP	E cardboard	0,11 kg	220x162x48	476x444x1,5
L04499	1,21 GBP	1,07 GBP	0,97 GBP	0,87 GBP	0,76 GBP	E cardboard	0,11 kg	200x153x55	478x453x1,5
L04500	1,79 GBP	1,58 GBP	1,43 GBP	1,29 GBP	1,12 GBP	E cardboard	0,16 kg	270x230x55	633x523x1,5
L04501	1,12 GBP	0,99 GBP	0,90 GBP	0,81 GBP	0,70 GBP	E cardboard	0,10 kg	140x140x60	468x412x1,5
L04502	1,70 GBP	1,51 GBP	1,36 GBP	1,23 GBP	1,07 GBP	E cardboard	0,16 kg	250x200x63	597x535x1,5
L04503	1,87 GBP	1,66 GBP	1,50 GBP	1,36 GBP	1,17 GBP	E cardboard	0,18 kg	200x210x78	662x545x1,5
L04504	2,63 GBP	2,33 GBP	2,11 GBP	1,92 GBP	1,65 GBP	E cardboard	0,25 kg	300x215x95	723x713x1,5
L04505	2,70 GBP	2,39 GBP	2,16 GBP	1,96 GBP	1,69 GBP	E cardboard	0,26 kg	280x200x105	733x723x1,5
L04506	2,65 GBP	2,34 GBP	2,12 GBP	1,94 GBP	1,66 GBP	E cardboard	0,25 kg	280x180x108	745x692x1,5
L04507	3,68 GBP	3,26 GBP	2,94 GBP	2,70 GBP	2,31 GBP	E cardboard	0,37 kg	300x320x112	983x781x1,5
L04508	2,74 GBP	2,42 GBP	2,19 GBP	2,00 GBP	1,72 GBP	E cardboard	0,26 kg	260x180x115	753x713x1,5
L04509	3,72 GBP	3,30 GBP	2,98 GBP	2,73 GBP	2,34 GBP	E cardboard	0,37 kg	290x300x117	959x791x1,5
L04510	4,38 GBP	3,88 GBP	3,50 GBP	3,25 GBP	2,75 GBP	B cardboard	0,46 kg	300x300x115	964x828x3
L04511	4,49 GBP	3,98 GBP	3,60 GBP	3,34 GBP	2,82 GBP	B cardboard	0,48 kg	350x300x115	964x878x3
L04513	4,66 GBP	4,12 GBP	3,72 GBP	3,46 GBP	2,93 GBP	B cardboard	0,51 kg	400x300x115	964x928x3
L04514	6,20 GBP	5,49 GBP	4,96 GBP	4,60 GBP	3,89 GBP	B cardboard	0,62 kg	420x370x120	1119x968x3
L04515	3,28 GBP	2,91 GBP	2,63 GBP	2,44 GBP	2,06 GBP	B cardboard	0,55 kg	370x260x140	998x959x3

## FEFCO 427 RETURNABLE PACKAGING

Product	FLEXO PRINT 1 COLOUR BLACK					Technical specifications			
	500 pcs	1000 pcs	1500 pcs	3000 pcs	5000 pcs	Material	Weight [kg]	Internal dimensions [mm]	Logistic dimensions [mm]
JUST FEFCO 427 RETURNABLE L01694	-	0,46 GBP	0,38 GBP	0,29 GBP	0,26 GBP	grey 380 E flute	0,12 kg	148x125x77	490x485x1,5
JUST FEFCO 427 RETURNABLE L01527	-	0,44 GBP	0,35 GBP	0,26 GBP	0,24 GBP	grey 380 E flute	0,10 kg	188x100x72	505x425x1,5
JUST FEFCO 427 RETURNABLE L01471	-	0,45 GBP	0,38 GBP	0,28 GBP	0,25 GBP	grey 380 E flute	0,10 kg	217x153x55	482x472x1,5
JUST FEFCO 427 RETURNABLE L00800	-	-	-	0,30 GBP	0,26 GBP	grey 380 E flute	0,11 kg	190x175x55	563x444x2
JUST FEFCO 427 RETURNABLE L01695	-	0,54 GBP	0,50 GBP	0,38 GBP	0,35 GBP	grey 380 E flute	0,15 kg	196x188x75	645x510x2
JUST FEFCO 427 RETURNABLE L01696	-	0,57 GBP	0,51 GBP	0,40 GBP	0,37 GBP	grey 380 E flute	0,17 kg	288x185,5x77	610x625x1,5
JUST FEFCO 427 RETURNABLE L01552	-	0,70 GBP	0,66 GBP	0,53 GBP	0,49 GBP	grey 380 E flute	0,23 kg	588x175x72	905x575x1,5
JUST FEFCO 427 RETURNABLE L00599	-	0,46 GBP	0,37 GBP	0,29 GBP	0,26 GBP	grey 380 E flute	0,13 kg	147x147x86	559x523x1,5
JUST FEFCO 427 RETURNABLE L01553	-	0,49 GBP	0,41 GBP	0,31 GBP	0,28 GBP	grey 380 E flute	0,13 kg	200x100x90	587x478x1,5
JUST FEFCO 427 RETURNABLE L01445	-	0,56 GBP	0,50 GBP	0,39 GBP	0,36 GBP	grey 380 E flute	0,20 kg	187x175x97	690x655x1,5
JUST FEFCO 427 RETURNABLE L01711	-	0,60 GBP	0,54 GBP	0,43 GBP	0,40 GBP	grey 380 E flute	0,21 kg	238x195x97	705x680x1,5
JUST FEFCO 427 RETURNABLE L00895	1,17 GBP	0,78 GBP	0,66 GBP	0,55 GBP	0,52 GBP	grey 380 E flute	0,35 kg	240x230x120	870x909x3
JUST FEFCO 427 RETURNABLE L00542	1,31 GBP	0,97 GBP	0,84 GBP	0,73 GBP	0,69 GBP	grey 455 B flute	0,42 kg	400x290x105	923x895x3
JUST FEFCO 427 RETURNABLE L01349	1,66 GBP	1,32 GBP	1,21 GBP	1,11 GBP	1,04 GBP	grey 480 B flute	0,65 kg	400x350x150	1050x1164x3
JUST FEFCO 427 RETURNABLE L00067-B4	-	0,57 GBP	0,49 GBP	0,38 GBP	0,35 GBP	grey 380 E flute	0,16 kg	290x185x70	609x332x8
JUST FEFCO 427 RETURNABLE L00066-B6	1,12 GBP	0,74 GBP	0,65 GBP	0,52 GBP	0,48 GBP	grey 380 E flute	0,26 kg	370x290x70	689x437x8
JUST FEFCO 427 RETURNABLE L00049-B4	1,43 GBP	1,04 GBP	0,94 GBP	0,77 GBP	0,72 GBP	grey 380 E flute	0,44 kg	370x290x140	969x577x8
JUST FEFCO 427 RETURNABLE L00065-B3	1,64 GBP	1,17 GBP	1,05 GBP	0,85 GBP	0,78 GBP	grey 410 B flute	0,52 kg	420x370x120	964x622x12

Product	DIGITAL PRINT 4+0/ pc.					Technical specifications			
	10-50 pcs	100 pcs	200 pcs	300 pcs	500 pcs	Material	Weight [kg]	Internal dimensions [mm]	Logistic dimensions [mm]
L04516	0,77 GBP	0,68 GBP	0,61 GBP	0,56 GBP	0,48 GBP	E cardboard	0,07 kg	150x123x35	432x316x1,7
L04517	1,10 GBP	0,98 GBP	0,86 GBP	0,79 GBP	0,68 GBP	E cardboard	0,12 kg	270x180x35	546x446x1,7
L04518	1,24 GBP	1,10 GBP	0,98 GBP	0,90 GBP	0,77 GBP	E cardboard	0,12 kg	250x170x40	541x436x1,7
L04519	1,26 GBP	1,11 GBP	0,99 GBP	0,91 GBP	0,78 GBP	E cardboard	0,12 kg	220x162x48	549x438x1,7
L04520	1,30 GBP	1,15 GBP	1,02 GBP	0,94 GBP	0,80 GBP	E cardboard	0,11 kg	200x153x55	480x446x1,7
L04521	1,91 GBP	1,69 GBP	1,50 GBP	1,39 GBP	1,18 GBP	E cardboard	0,14 kg	270x230x55	574x496x1,7
L04522	1,20 GBP	1,06 GBP	0,94 GBP	0,87 GBP	0,74 GBP	E cardboard	0,10 kg	140x140x60	469x406x1,7
L04523	1,82 GBP	1,61 GBP	1,43 GBP	1,33 GBP	1,12 GBP	E cardboard	0,16 kg	250x200x63	598x528x1,7
L04524	2,00 GBP	1,77 GBP	1,57 GBP	1,46 GBP	1,23 GBP	E cardboard	0,18 kg	200x210x78	663x538x1,7
L04525	2,82 GBP	2,49 GBP	2,21 GBP	2,07 GBP	1,74 GBP	E cardboard	0,25 kg	300x215x95	724x706x1,7
L04526	2,88 GBP	2,55 GBP	2,26 GBP	2,12 GBP	1,78 GBP	E cardboard	0,26 kg	280x200x105	726x723x1,7
L04527	2,83 GBP	2,51 GBP	2,22 GBP	2,09 GBP	1,75 GBP	E cardboard	0,25 kg	280x180x108	738x693x1,7
L04528	3,93 GBP	3,48 GBP	3,09 GBP	2,91 GBP	2,43 GBP	E cardboard	0,37 kg	300x320x112	985x774x1,7
L04529	2,93 GBP	2,59 GBP	2,30 GBP	2,16 GBP	1,81 GBP	E cardboard	0,26 kg	260x180x115	745x713x1,7
L04530	3,98 GBP	3,53 GBP	3,13 GBP	2,94 GBP	2,46 GBP	E cardboard	0,37 kg	290x300x117	960x784x1,7
L04531	4,68 GBP	4,15 GBP	3,68 GBP	3,10 GBP	2,89 GBP	B cardboard	0,45 kg	300x300x115	965x818x3,2
L04532	4,81 GBP	4,26 GBP	3,77 GBP	3,18 GBP	2,97 GBP	B cardboard	0,48 kg	350x300x115	965x868x3,2
L04533	4,98 GBP	4,41 GBP	3,91 GBP	3,30 GBP	3,07 GBP	B cardboard	0,51 kg	400x300x115	965x918x3,2
L04534	6,63 GBP	5,87 GBP	5,20 GBP	4,39 GBP	4,09 GBP	B cardboard	0,61 kg	420x370x120	1120x958x3,2
L04535	3,51 GBP	3,11 GBP	2,76 GBP	2,33 GBP	2,17 GBP	B cardboard	0,54 kg	370x260x140	988x960x3,2

## AUTO FEFCO 710 RETURNABLE PACKAGING

Product	FLEXO PRINT 1 COLOUR BLACK					Technical specifications			
	500 pcs	1000 pcs	1500 pcs	3000 pcs	5000 pcs	Material	Weight [kg]	Internal dimensions [mm]	Logistic dimensions [mm]
AUTO SAVE FEFCO 710 RETURNABLE L00080-B3	-	-	0,47 GBP	0,35 GBP	0,31 GBP	grey 410 B flute	0,16 kg	213x153x109	372x270x15
AUTO SAVE FEFCO 710 RETURNABLE L00079-B5	-	-	0,55 GBP	0,44 GBP	0,39 GBP	grey 410 B flute	0,23 kg	255x180x160	441x347x15
AUTO SAVE FEFCO 710 RETURNABLE L00084-B3	1,09 GBP	0,75 GBP	0,64 GBP	0,52 GBP	0,48 GBP	grey 410 B flute	0,24 kg	280x200x175	486x385x15
AUTO SAVE FEFCO 710 RETURNABLE L00651-B3	-	0,73 GBP	0,61 GBP	0,48 GBP	0,43 GBP	grey 410 B flute	0,25 kg	300x200x100	506x513x15
AUTO SAVE FEFCO 710 RETURNABLE L00083-B3	1,27 GBP	0,90 GBP	0,78 GBP	0,65 GBP	0,61 GBP	grey 410 B flute	0,33 kg	325x250x185	581x445x15
AUTO SAVE FEFCO 710 RETURNABLE L00175-B2	1,36 GBP	0,98 GBP	0,85 GBP	0,73 GBP	0,68 GBP	grey 410 B flute	0,23 kg	350x250x140	606x399x15
AUTO SAVE FEFCO 710 RETURNABLE L367 B5	-	-	0,50 GBP	0,37 GBP	0,33 GBP	grey 380 E flute	0,16 kg	195x147x100	714x347x6
AUTO SAVE FEFCO 710 RETURNABLE L00374 B4	1,08 GBP	0,71 GBP	0,59 GBP	0,48 GBP	0,43 GBP	grey 380 E flute	0,21 kg	240x160x120	834x402x6
AUTO SAVE FEFCO 710 RETURNABLE L00376 B5	1,29 GBP	0,93 GBP	0,81 GBP	0,68 GBP	0,64 GBP	grey 455 B flute	0,34 kg	300x215x90	622x521x6
AUTO SAVE FEFCO 710 RETURNABLE L00377 B3	1,45 GBP	1,09 GBP	0,96 GBP	0,83 GBP	0,78 GBP	grey 480 B flute	0,37 kg	320x210x168	554x536x6

## ROLLBOX PACKAGING

Product	FLEXO PRINT 1 COLOUR BLACK			Technical specifications			
	2000 pcs	3000 pcs	5000 pcs	Material	Weight [kg]	Internal dimensions [mm]	Logistic dimensions [mm]
rollbox XS L00069-B2	0,29 GBP	0,23 GBP	0,19 GBP	grey 340 E flute	0,07 kg	210x150x60	508x252x3
rollbox S L00071-B3	0,33 GBP	0,27 GBP	0,23 GBP	grey 340 E flute	0,1 kg	270x180x75	813x312x3
rollbox M L00070-B3	0,36 GBP	0,31 GBP	0,27 GBP	grey 340 E flute	0,13 kg	300x210x90	718x342x3
rollbox L L00072-B3	0,39 GBP	0,33 GBP	0,30 GBP	grey 340 E flute	0,15 kg	330x230x100	788x372x3
rollbox XL L00073-B3	0,41 GBP	0,34 GBP	0,30 GBP	grey 340 E flute	0,22 kg	375x300x125	1020x418x3



**CARDBOARD ENVELOPES**

Product	FLEXO PRINT 1 COLOUR BLACK			Technical specifications			
	2000 pcs	3000 pcs	5000 pcs	Material	Weight [kg]	Internal dimensions [mm]	Logistic dimensions [mm]
Envelope A5 L00075-B3	0,33 GBP	0,26 GBP	0,22 GBP	grey 380 E flute	0,08 kg	195x180x25	369x273x10
Envelope A4 L00074-B3	0,39 GBP	0,32 GBP	0,27 GBP	grey 380 E flute	0,12 kg	210x308x48	224x237x10
Envelope A4.1 L00858-B1	0,37 GBP	0,30 GBP	0,26 GBP	grey 380 E flute	0,1 kg	210x248x48	423x262x10
Envelope A3 L00076-B3	0,46 GBP	0,38 GBP	0,34 GBP	grey 380 E flute	0,17 kg	290x410x25	467x319x10

**POLAND:**

+48 510 925 460  
+ 48 506 742 763  
pl@laboprint.eu

**ITALY:**

+48 453 071 283  
it@laboprint.eu

**NETHERLANDS:**

+48 516 041 055  
nl@laboprint.eu

**UNITED KINGDOM:**

+48 510 925 418  
+48 572 698 260  
en@laboprint.eu

**AUSTRIA:**

+48 510 925 461  
+48 504 237 723  
at@laboprint.eu

**SWITZERLAND:**

+48 510 925 463  
+48 510 925 461  
ch@laboprint.eu

**DENMARK:**

+48 510 925 463  
+48 510 925 461  
dkl@laboprint.eu

**SWEDEN:**

+48 504 067 389  
+48 504 067 294  
se@laboprint.eu

**IRELAND:**

+48 510 925 418  
+48 572 698 260  
irl@laboprint.eu

**LUXEMBOURG:**

+48 504 237 723  
+48 504 067 403  
lu@laboprint.eu

**NORWAY:**

+48 504 067 294  
no@laboprint.eu

**FINLAND:**

+48 504 067 294  
+48 504 067 389  
fi@laboprint.eu

**BELGIUM:**

+48 504 067 403 (FR)  
+48 516 041 055 (NL)  
be@laboprint.eu

**GERMANY:**

+48 510 925 461  
+48 504 237 723  
de@laboprint.eu

**FRANCE:**

+48 504 067 403  
+ 48 516 041 030  
fr@laboprint.eu